

NARRATIVE REVIEW



Management of moderate to severe traumatic brain injury: an update for the intensivist

Geert Meyfroidt^{1*}, Pierre Bouzat², Michael P. Casaer¹, Randall Chesnut³, Sophie Rym Hamada⁴, Raimund Helbok⁵, Peter Hutchinson⁶, Andrew I. R. Maas⁷, Geoffrey Manley⁸, David K. Menon⁹, Virginia F. J. Newcombe⁹, Mauro Oddo¹⁰, Chiara Robba¹¹, Lori Shutter¹², Martin Smith¹³, Ewout W. Steyerberg¹⁴, Nino Stocchetti¹⁵, Fabio Silvio Taccone¹⁶, Lindsay Wilson¹⁷, Elisa R. Zanier¹⁸ and Giuseppe Citerio^{19,20}

© 2023 Springer-Verlag GmbH Germany, part of Springer Nature, corrected publication 2023

Abstract

Traumatic brain injury (TBI) remains one of the most fatal and debilitating conditions in the world. Current clinical management in severe TBI patients is mainly concerned with reducing secondary insults and optimizing the balance between substrate delivery and consumption. Over the past decades, multimodality monitoring has become more widely available, and clinical management protocols have been published that recommend potential interventions to correct pathophysiological derangements. Even while evidence from randomized clinical trials is still lacking for many of the recommended interventions, these protocols and algorithms can be useful to define a clear standard of therapy where novel interventions can be added or be compared to. Over the past decade, more attention has been paid to holistic management, in which hemodynamic, respiratory, inflammatory or coagulation disturbances are detected and treated accordingly. Considerable variability with regards to the trajectories of recovery exists. Even while most of the recovery occurs in the first months after TBI, substantial changes may still occur in a later phase. Neuroprognostication is challenging in these patients, where a risk of self-fulfilling prophecies is a matter of concern. The present article provides a comprehensive and practical review of the current best practice in clinical management and long-term outcomes of moderate to severe TBI in adult patients admitted to the intensive care unit.

Keywords: Traumatic brain injury, Intracranial pressure, Cerebral perfusion pressure, Intensive care unit, Neuromonitoring, Pre-hospital management

Introduction

Traumatic brain injury (TBI) remains one of the most fatal and debilitating conditions in the world, affecting all ages, including children, the working-age population as well as the elderly. The actual incidence is difficult to

determine but is estimated by the Global Burden of Disease study to be around 27 million cases per year, globally [1]. Most TBI cases occur in low- and middle-income countries, and huge disparity in outcomes continues to exist between and within these different settings. The quest for specific neuroprotective agents in TBI has been disappointing [2]. Consequently, the current clinical management approach in severe TBI patients is mainly focused on reducing secondary brain injury, a cascade of events caused by the physiologic responses following the initial injury, including edema and hematomas leading

*Correspondence: geert.meyfroidt@kuleuven.be

¹ Department and Laboratory of Intensive Care Medicine, University Hospitals Leuven and KU Leuven, Leuven, Belgium
Full author information is available at the end of the article

to elevations in intracranial pressure (ICP), mechanical distortion of surrounding brain tissue, or reduced energy substrate delivery, all of which potential causes of additional brain damage and worse clinical outcomes. Optimizing the balance between substrate delivery and consumption is the main therapeutic goal, a strategy which may be challenging as a continuous exercise, even in highly specialized centers, since optimal physiological targets may vary, not just between patients, but also within patients as the disease evolves over time. Over the past decades, multimodality monitoring has become more widely available, and clinical as well as research efforts are concentrated towards the development of management protocols based on individualized precision medicine, in the hope that this will improve the outcomes of individual patients. In the present review, the current state of the literature on severe adult TBI management is summarized, to provide a comprehensive and practical review of the current best practice in clinical management, and to identify areas where empirical evidence is lacking.

The first hours

Initial resuscitation targets

The early management of TBI is a continuum from the field to the trauma bay. Triage and transfer to specialized neuro-trauma-centers may be indicated depending on the local setting, but this is outside the scope of the present review. In the pre-hospital and early in-hospital phases, the main therapeutic goal is to avoid secondary brain insults (particularly brain hypoperfusion, hypoxia, and major bleeding) (Table 1).

Several studies reported worse neurological outcome in hypotensive TBI patients. The association of systolic hypotension (<90 mmHg) and worse outcomes

Take-home message

The management of traumatic brain injury (TBI) has changed over the past decade, from a dogmatic approach where intracranial pressure control in isolation was confused with TBI management, to a multimodal approach, in which pathophysiological derangements are detected and treated accordingly.

has been described earlier [3]. Across a wide pressure range (40–119 mmHg), a linear association between the lowest pre-hospital systolic blood pressure (SBP) and severity-adjusted probability of mortality exists [4]. Different guidelines differ in targets and thresholds, with recommendations to maintain mean arterial blood pressure (MAP) above 80 mmHg [5], or to keep the SBP above 100 mmHg for 50- to 69-year-old TBI patients and above 110 mmHg for younger (15–49 years) or older (>70 years) patients [6, 7]. Whether the early blood pressure target should be individualized based on cerebrovascular autoregulation assessment, for instance by making use of transcranial Doppler (TCD) to optimize diastolic flow velocity (>20 cm/s) and pulsatility index (<1.4) [8], remains to be debated. Brain perfusion is also highly influenced by systemic partial pressure of carbon dioxide (PaCO₂). Hypo- as well as hypercapnia should be avoided. End-tidal CO₂ (EtCO₂) should always be monitored in intubated TBI patients [9], and ventilation adjusted to a target of 30–35 mmHg [7], which should later be adapted as soon as an arterial blood gas analysis is available.

Both the presence and duration of hypoxemic episodes (peripheral oxygen saturation (SpO₂) <90%) are clearly associated with increased mortality and worse neurological outcome [4, 10]. Consequently, maintaining SpO₂ at minimum above this threshold is also an early resuscitation target.

Finally, it is imperative to stop bleeding from associated injuries, to maintain hemoglobin >7 g/dL, and to treat coagulopathy, by rapidly reversing therapeutic anticoagulation, considering platelet supplementation in patients on anti-platelet agents, and supplementing platelets and clotting factors where needed [5]. Tranexamic acid has been reported to improve mortality and outcome in multiple trauma patients, and in a subgroup of moderate-to-severe TBI (see details below).

Table 1 Initial resuscitation targets

Parameter	Values/targets	Objectives
Blood pressure	MAP > 80 mmHg SBP > 100 or 110 mmHg	Preserving CBF
SpO ₂	> 90%	Avoiding brain hypoxia
EtCO ₂	30–35 mmHg	Preserving CBF
Hb	> 7 g/dl	Avoiding brain hypoxia
Anticoagulant	Reversal	Limiting blood loss and expansion of hemorrhagic contusions

Evidence for these target values is derived from associations between targets and outcome. Evidence for treatment according to these target values from randomized controlled trials, is currently lacking

SBP systolic blood pressure; MAP mean arterial blood pressure; SpO₂ peripheral oxygen saturation; EtCO₂ end tidal CO₂; Hb hemoglobin

In the intensive care unit

Secondary insults after trauma

Management of elevated intracranial pressure (including indications for monitoring)

ICP management is central to TBI care and ICP monitoring should be considered a default in severe TBI. ICP

monitoring may be by an external ventricular drain or intraparenchymal device. The former is inexpensive, readily available, and allows cerebrospinal fluid drainage. The latter is simple, of low-maintenance, and has a relatively low rate of complications, but is more expensive.

Indications for ICP monitoring and management are in evolution, with the concept of a fixed treatment threshold in question [11, 12]. In the latest edition of the Brain Trauma Foundation (BTF) Guidelines [6], “*Management of severe TBI patients using information from ICP monitoring is recommended to reduce in-hospital and 2-week post-injury mortality*” (Level IIB evidence). As for ICP thresholds, the same guidelines indicate 22 mmHg. Protocolized-care within- and between-specialties dealing with TBI care appears associated with improved outcome and efficiency. Across the world, considerable variability continues to exist in the use of ICP monitoring, even between centers from the same geographical region or income category [13]. Over the 146 intensive care units (ICUs) in 42 countries that participated in Synapse-ICU, 55% of TBI patients had an ICP monitor inserted. Six-month mortality was lower in patients who had ICP monitoring [441/1318 (34%)] than in those who were not monitored [517/1049 (49%); $p < 0.0001$], in particular in patients with at least one unreactive pupil [hazard ratio (HR) 0.35, 95% CI 0.26–0.47; $p < 0.0001$]. Patients with ICP monitoring were treated more aggressively, as evident from their higher Therapeutic Intensity Level (TIL) scores [9 (IQR 7–12)] compared to those who were not monitored (5 [3–8]; $p < 0.0001$). An increment of one point in TIL was associated with a reduction in mortality (HR 0.94, 95% CI 0.91–0.98; $p = 0.0011$).

Prompt detection and surgical evacuation of intracranial masses is crucial. Careful clinical observation and repeated brain computed tomography (CT) scans can be lifesaving. ICP management can be organized into tiers, as suggested by the recent Seattle Brain Injury Consensus Conference guidelines (SIBICC) [14, 15]. A modified version of the SIBICC algorithms is presented in Fig. 1. Tier 0 is the expected level of basic ICU care for all ICP monitored patients. When ICP remains elevated, Tier 1 treatments are suggested. Many cases are entirely manageable at Tier 1, and a general principle is to use “the lowest possible treatment tier”. However, if ICP proves resistant to Tier 1, Tier 2 treatments are considered, including the assessment of pressure autoregulation and cerebral perfusion pressure (CPP) target-setting based on its status, as explained below. Tier 3 treatments have the highest risk of complications and include decompressive craniectomy, high-dose barbiturates, or mild hypothermia. These high-risk therapies should be reserved for the most severe situations, in patients where survival with an acceptable quality of life is still realistic.

When advancement above Tier 1 is required, ancillary monitoring such as brain tissue oxygen tension (PbtO₂) monitoring can be considered [15] and will be discussed below. Before advancing Tiers, the patient should be re-examined to assess the cause of the persistent ICP elevation, and to exclude obvious and easily remediable causes such as insufficient sedation or hypoventilation. In addition, a repeat CT scan of the brain to re-evaluate intracranial pathology should always be considered.

Remember that the pathophysiology of TBI includes much more than just intracranial overpressure. While avoiding ischemic or mechanical damage from elevated ICP is mandatory, lowering ICP does not treat the primary brain injury, nor other pathophysiological phenomena such as neuro-inflammation or excitotoxicity. Although still in development, adjusting treatment to fit the injury is the goal [11, 12]. The 22 mmHg ICP threshold may not be absolute and a recent CENTER-TBI study reported ICP levels of 18 ± 4 mm Hg to be associated with poorer outcome [16]. In addition, secondary brain damage resulting from intracranial hypertension is not merely a matter of crossing a certain threshold. Rather, observational studies suggest that the “dose of ICP”, the combination of intensity and duration of episodes of intracranial hypertension, has an even better association with outcome [16, 17]. The availability of this parameter at the bedside could assist in clinical decision making before escalating therapy to a higher tier.

Cerebral perfusion pressure—hemodynamic management

CPP, calculated as the difference between median arterial pressure (MAP) and ICP, is a critical treatment target in the management of TBI. First, CPP is a key driver of oxygen [18] and substrate [19] delivery. As such, treatment of inappropriately low CPP values will avoid cerebral hypoperfusion. On the other hand, preventing excessive rises in CPP is important as well, as they could lead to increased perilesional edema. In TBI patients with intact cerebrovascular autoregulation, [20] increases and decreases in CPP can drive autoregulatory vasoconstriction and vasodilatation, respectively. Even while the resulting changes in cerebral blood volume are small, in a non-compliant intracranial cavity they can translate into significant changes in ICP. Attempts to establish a single universal CPP target, which avoids the harms of both a low and a high CPP, based on association with outcome in populations of patients, have led to conflicting recommendations. Previous guidelines [21] suggested a single CPP target of 70 mmHg, subsequently revised downwards to 60 mmHg due to the risk of cardiorespiratory complications. Current guidelines [6] recommend varying CPP targets between 60 and 70 mmHg, acknowledging that critical CPP thresholds vary with age and the

presence or absence of cerebrovascular autoregulation [22]. Individualized CPP targets based on neuromonitoring are often proposed as alternative, even while evidence from randomized controlled trials is lacking. Several physiological targets have been investigated, such as the P_{btO_2} , or the Pressure Reactivity Index (PRx). Target values for these metrics are based on historical associations between monitored values and outcome. The COGITATE trial [23] has explored safety and feasibility of a strategy to steer the CPP towards an optimal value (CPPopt) where cerebrovascular autoregulation is most active. In the intervention group of the trial, the CPP target was adapted every 4 h to a PRx-calculated CPPopt. COGITATE was not powered to demonstrate an outcome benefit for this strategy, but the COGITATE protocol can subsequently be studied in future interventional clinical trials.

Recent SIBICC [14, 15] guidelines have attempted to integrate multimodality monitoring (ICP, P_{btO_2} , and autoregulatory status) into decision support algorithms. The MAP challenge, a controlled trial of induced and reversible blood pressure augmentation followed by an evaluation of clinical and neuromonitoring parameters [14, 15, 24], is a pragmatic approach to integrate physiology in clinical practice. However, it should be emphasized not only that evidence for this approach is lacking, but also that this is a potentially risky intervention that should only be left to practitioners with experience in interpreting the results [24, 25].

Target CPP can be achieved by reducing ICP or by increasing MAP. In practice, ICP related interventions are most appropriate when ICP is elevated, and the interventions used in this context are discussed above. Augmentation of MAP can be achieved in many ways.

Specific recommendations in the TBI population on the relative benefits and harms of fluid loading versus vasoactive drugs, and the choice of vasoactive drug used for this purpose, remain uncertain. The routine early administration of vasopressors to support CPP may mask under-resuscitation. Even while evaluating the volume status in critically ill patients is challenging, the volume status should be assessed before initiating vasopressors, and periodically thereafter. Using volume responsiveness of the MAP may result in fluid overload, which is undesirable since even a modestly elevated fluid balance is associated with worse outcome [26]. On the other hand, hypovolemia should be avoided as well. The choice of intravenous fluids is discussed below.

There is equally limited evidence to support the choice of a particular vasoactive drug in this situation, but norepinephrine appears to be the most used in practice, compared to other inotropes [27]. While cardiac output may be independently associated with cerebral perfusion, [28] it is rarely monitored, and MAP remains the most common target for circulatory management in TBI. Several vasopressors have been used for CPP augmentation (norepinephrine, phenylephrine, dopamine, and vasopressin) [29], but evidence to support a choice of any individual agent is lacking [30]. Dopamine produces less predictable CPP augmentation than norepinephrine [31]. Vasopressin and analogues (such as terlipressin) should be used with caution because of risk of hyponatremia (and subsequent cerebral oedema), and excessive vasoconstriction. Given the importance of maintaining CPP, inodilators such as phosphodiesterase inhibitors are probably best avoided unless specific indications, and always combined with vasopressors. Escalations of

(See figure on next page.)

Fig. 1 An algorithm for treating intracranial pressure (ICP) (modified from The Seattle International Severe Traumatic Brain Injury Consensus Conference (SIBICC)). In patients with ICP monitoring (with/without additional brain oxygen monitoring) the four represent the starting points for deciding a treatment strategy. Tier 0, i.e. basic strategies (not included in the flowchart), apply to TBI patients who are admitted to an intensive care unit (ICU) for whom the decision to monitor ICP has been made. The goal of tier-zero is to establish a stable, neuroprotective physiologic baseline regardless of eventual ICP readings. Tier-zero sedatives and analgesics target comfort and ventilator tolerance, temperature management targets the avoidance of fever and CPP > 60 mm Hg. Lower tier treatments are viewed as having a more favorable side effect profile than higher tiers and generally should be employed first. Treatments in any given tier are considered equivalent, with the selection of one treatment over another based on individual patient characteristics and physician discretion and multiple items from a single tier can be trialed individually or in combination with the goal of a rapid response. The provider should consider moving to more aggressive interventions in a higher tier quickly if the patient is not responding. Panel **A** Patients with ICP below the threshold usually do not need treatment except for conditions in which a high intracranial pressure–time burden is present because this condition is associated with worse outcomes. Refer to [1] for details. Therefore, in this setting, treatment could be considered also below the classical threshold of 22 mmHg. Panel **B** Consensus-based algorithm for the management of severe traumatic brain injury with brain hypoxia and normal intracranial pressure. Panel **C** Consensus-based algorithm for the management of severe traumatic brain injury with intracranial hypertension and brain hypoxia. Panel **D** Consensus-based algorithm for the management of severe traumatic brain injury with intracranial hypertension and normal brain oxygenation. Inter-tier recommendations encourage patient reassessment for remediable causes of treatment resistance. Stepping to a higher tier is a potential indicator of increased disease severity. As higher tiers represent interventions with increased associated risks, we recommend reassessing the patient's basic intra- and extra-cranial physiologic status and reconsidering the surgical status of intracranial mass lesions not previously considered operative



Fig. 1 (See legend on previous page.)

the need for vasopressors may occur and should prompt a thorough hemodynamic evaluation (including echocardiography or invasive monitoring) and a suspicion of associated sepsis or pituitary-adrenal insufficiency. For the latter, the cortisol/C-reactive protein ratio may be a useful index [32].

Hopefully, future trials will be able to provide evidence that current expert-opinion based CPP policies have impact on clinical outcomes. It remains striking that even fundamental aspects of CPP management, such as the level at which MAP is referenced (mid-axillary line versus external auditory meatus), remain inconsistently applied, both in reported studies and in clinical practice [33]. It should be clear that for appropriate CPP calculation, both MAP and ICP should be calibrated at the level of the foramen of Monro, corresponding to the external meatus acusticus.

Multimodality monitoring targets and management

Additional physiological information can be obtained from different monitors to support clinical decision-making in TBI patients. In some cases, ICP and CPP targets can be beneficially adjusted and followed based on multimodality monitoring. Huge variability in the application of multimodality monitoring exists [27], which can be related to the current lack of scientific evidence from clinical trials on which processes to monitor, and whether monitoring these processes is cost-effective or impacts outcome [34]. As such, universal recommendations on the indications for ancillary monitoring cannot be made, but, if applied, multimodality monitoring should be focused on determining the pathology underlying the ICP elevation (e.g., ischemia, hyperemia, edema, cerebrospinal fluid dynamics disruption) as well as determining the toxicity of the ICP elevation (e.g., hypoperfusion, herniation). Nevertheless, apart from the potential benefit for clinical management, neuromonitoring can have an additional important role in the quest for appropriate neuroprotective treatments, the identification of subgroups of patients that could most benefit from certain therapies, or to gain insight in the still incompletely understood underlying pathophysiological processes following severe TBI. Table 2 summarizes currently advised target values for some neuromonitoring modalities.

Brain tissue oxygen tension monitoring

Non-invasive tools to measure brain oxygen are currently not recommended in TBI. Invasive PbtO₂-monitoring is gaining favor as a second monitoring parameter in TBI, added to ICP monitoring [35, 36]. Brain oxygenation depends on a complex interplay

Table 2 Proposed target values for some neuromonitoring modalities

	Normal	Desirable	Critical
ICP	~ 10 mmHg	< 18–22 mmHg	> 25 mmHg
CPP	50–60 mmHg	60– (80) mmHg	< 50 mmHg
PbtO ₂	~ 30 mmHg	20–25 mmHg	< 15 mmHg
Lactate/Pyruvate Ratio	< 25	< 25	> 40
Brain Glucose	> 1 mmol/l	> 0.8 mmol/l	< 0.5 mmol/l
Brain temperature	~ 36.5 °C	36.5–37 °C	> 37.5 °C

Evidence for these target values is derived from associations between targets and outcome. Evidence from randomized controlled trials that treating TBI patients according to these target values impacts their outcomes is currently lacking

ICP intracranial pressure; CPP cerebral perfusion pressure; PbtO₂ brain tissue oxygen

of oxygen delivery, diffusion, consumption, and metabolism. PbtO₂-values below 20 mmHg are associated with worse outcome [36]. Multiple interventions can be used individually or in combination to manage brain hypoxia. The BOOST-II [37] trial has demonstrated feasibility of a combined ICP-PbtO₂ protocol. Based on the ICP and PbtO₂ values of the patient, four situations are defined, where both, none, or only one parameter are/is out of range; and this framework has been incorporated in the SIBICC guidelines as well [15] (Fig. 1).

There are currently three randomized controlled trials investigating the treatment of low PbtO₂ values in TBI as follows: the subsequent BOOST-III trial (NCT03754114) [38], the Brain Oxygen Neuromonitoring in Australia and New Zealand Assessment Trial (BONANZA) (ACTRN12619001328167p) [39] and the French OXY-TC trial [40] (NCT02754063).

Cerebral microdialysis

Cerebral microdialysis allows measurement of small molecular weight substances (glucose, lactate, pyruvate, glycerol, glutamate) in brain tissue to identify neuroglycopenia, energy metabolic crisis, cerebral ischemia, or excitotoxicity and, which are independent predictors for mortality and sometimes precede intracranial hypertension [41]. Recommendations to implement microdialysis in clinical practice were summarized in a 2014 expert consensus statement [42]. However, use is still limited to academic centers, mostly to gain pathophysiological insights, rather than as a clinical tool. In this perspective, it is worth mentioning that cerebral microdialysis can also be used to measure neuronal/axonal proteins (i.e., neurofilament light (NFL) and tau) and proteins of glial activation or blood brain barrier dysfunction (i.e., glial fibrillary acidic protein (GFAP)), with potentially

important implications in getting insights on injury evolution [43].

Pupillometry

The serial evaluation of pupillary size and reactivity is a fundamental component of the neurological assessment of TBI patients. Currently, assessment is mostly performed by nurses or physicians using manual flash penlights, which is non-quantitative, and inter-operator dependent [44].

Using an infrared light-emitting diode and a digital camera, automated pupillometry can provide quantitative and objective information on pupillary asymmetry, size, constriction variation, latency, constriction, and dilation velocity [45].

Automated pupillometry may have several applications in TBI patients. First, by reducing errors in the evaluation of pupillary function [46, 47], a more precise and early detection of neuroworsening and neurological complications is possible. Second, a relationship between the Neuroptics® NPi-200 Neurological Pupil Index (NPi) and ICP has been demonstrated, with values <3 being indicative of increased ICP >20 mmHg [48]. Finally, an ongoing multicenter study will assess whether pupillometry could be used for neuroprognostication in TBI patients [49], like its use in cardiac arrest patients [50].

Brain ultrasonography

In TBI, transcranial color-coded duplex ultrasonography (TCCD) may be a helpful bedside tool to detect intracranial hemorrhage, midline shift, hydrocephalus, and cerebrovascular alterations [51].

Intracranial hypertension can be estimated non-invasively through ultrasound, although these methods are not accurate enough to substitute invasive monitoring. An optic nerve sheath diameter (ONSD) above 6 mm (measured 3 mm behind the retina using a high frequency probe of at least 7.5 MHz), is indicative of increased ICP [52]. Waveform analysis of the middle cerebral artery (MCA) diastolic flow velocity, and an increased Pulsatility index (PI, defined as: systolic flow velocity (FV) – diastolic FV/mean FV), can also raise suspicion of increased ICP [51, 53]. These tools could be useful when invasive methods are not available (i.e., low-income countries) or contraindicated (i.e., severe coagulopathy), or in borderline situations to discriminate patients at risk of developing intracranial hypertension.

Electro-encephalography (EEG)

Convulsive and non-convulsive seizures occur frequently after TBI [54], often remain undetected, and are a treatable cause of neurological deterioration. For this reason, it can be useful to use continuous or intermittent EEG

monitoring, which is also recommended as inter-tier evaluation in the SIBICC guidelines [14, 15]. In addition, invasive electrophysiological monitoring can identify cortical spreading depolarizations, which occur in up to 50% of TBI patients and are associated with poor outcome [55].

Extracranial complications

Respiratory management

The setting of mechanical ventilation in TBI is important [6] and may contribute to secondary brain injury, due to the tight interactions between cerebral and respiratory dynamics, affecting CPP, venous return, vasomotor tone, and oxygen delivery. Pulmonary complications such as ventilator-associated pneumonia (VAP) are relatively common in TBI patients, complicating up to 30% of cases [56]. Lung protective strategies (LPS), especially low tidal volume and plateau pressures, might be beneficial [57] in this population (Table 3), even while they carry the risk of increasing PaCO₂ and ICP. The use of positive end expiratory pressure (PEEP) may improve oxygenation, alveolar recruitment, and ventilation–perfusion mismatch, and can be safely applied in TBI patients provided hemodynamic stability is maintained and alveolar hyperdistention avoided. The roles of recruitment maneuvers, prone positioning, and other rescue therapies are less well established as they can have detrimental effects on ICP and CPP (Table 3). These more aggressive strategies should be considered on a case-by-case basis, evaluating risks and benefits after multidisciplinary assessment. In selected cases, extracorporeal systems (carbon dioxide removal or extracorporeal membrane oxygenation) have been used [58], albeit with minimum or no systemic anticoagulation because of the risk of intracranial bleeding.

The central goal of mechanical ventilation in TBI is the avoidance of both hypoxia and hyperoxia. Current guidelines recommend that the optimal target range of PaO₂ in patients with TBI is 80–120 mmHg. Similarly, hypercapnia should be avoided (optimal target in absence of ICP elevation is 35–45 mmHg). However, mild-short term hypocapnia has been suggested as part of the management of refractory intracranial hypertension, [6] and centers who use this strategy in combination with ICP monitoring report similar outcomes than those who do not [59]. In summary, when defining mechanical ventilation setting and targets in TBI, a balance needs to be found between brain and lung protection. PbtO₂-monitoring may help the intensivists to target specific values of PaCO₂ and PaO₂.

Fluid and transfusion management

The standard fluid management in patients with TBI is aimed at maintaining a normal hemodynamic status,

Table 3 Respiratory management: an overview

Parameter	Key messages	Clinical recommendation
PaO ₂	Hypoxia is a well-known cause of secondary brain damage Hyperoxia seems to worsen outcome by increasing cerebral inflammation and reactive oxygen species	Target PaO ₂ = 80–120 mmHg
PaCO ₂	Hypercapnia may cause cerebral vasodilation and increased ICP Hypocapnia may reduce ICP but can cause cerebral vasoconstriction and ischemia	Target PaCO ₂ = 35–45 mmHg In case of intracranial hypertension: PaCO ₂ = 35–38 mmHg as Tier 1 PaCO ₂ = 32–35 mmHg as Tier 2, preferably with additional PbtO ₂ -monitoring PaCO ₂ = 30–32 mmHg (briefly) as rescue for refractory intracranial hypertension (not routinely recommended)
TV/Pplat	High TV and Pplat increase the risk of ventilator-induced lung injury in brain injured patients Low TV may cause hypercapnia and increased ICP	TV = 6–8 mL/kg PBW, driving pressure < 15 cmH ₂ O, Pplat 18–25 cmH ₂ O
PEEP	PEEP can improve oxygenation and prevent atelectasis PEEP can lead to increased intrathoracic pressure, reduced jugular venous outflow, and hemodynamic instability Alveolar hyperdistention caused by excessive levels of PEEP can increase PaCO ₂ values	PEEP should be set according to the principles applied in the general ICU population, considering systemic oxygenation, respiratory mechanics (compliance), and hemodynamic status
Recruitment manoeuvres	RM may improve oxygenation RM can cause hemodynamic instability and reduction of CPP RM can increase intrathoracic pressure and reduce jugular venous outflow	RM only as rescue therapy (hypoxemia responsive to PEEP, and considering/preventing the risk of hemodynamic instability)
Prone positioning	May improve oxygenation and improve outcomes in hypoxic respiratory failure May improve cerebral oxygenation Risk of hemodynamic instability Risk of ICP catheter dislocation	May be taken in consideration as rescue therapy, considering risks and benefits to improve systemic and cerebral oxygenation
iNO	May improve systemic and cerebral oxygenation No definite evidence regarding outcome benefit	Should be considered in case of refractory hypoxemia with pulmonary hypertension
ECCO ₂ R	Can allow protective ventilation with PaCO ₂ control Quick reduction of PaCO ₂ could lead to cerebral vasoconstriction	Can be considered in TBI without active intracranial bleeding None or reduced dose of heparin for cannulation should be applied
ECMO	Can improve oxygenation and control PaCO ₂ , but often requires systemic anticoagulation and thus increases the risk of bleeding Quick changes in PaCO ₂ and PaO ₂ can lead to cerebral vasoconstriction, loss of autoregulation and intracerebral complications	Can be considered in TBI without active intracranial bleeding None or reduced dose of heparin for cannulation should be applied

PaO₂ arterial oxygen tension; PaCO₂ arterial carbon dioxide tension; TV tidal volume; Pplat plateau pressure; ICP intracranial pressure; PBW predicted body weight; PEEP positive end-expiratory pressure; RM recruitment manoeuvres; CPP cerebral perfusion pressure; iNO inhaled nitric oxide; ECCO₂R extracorporeal carbon dioxide removal; ECMO extracorporeal membrane oxygenation

guided by invasive and non-invasive monitoring, including arterial blood pressure, fluid balance and urinary output [60], and even oxygen venous saturation, blood lactate and cardiac output or other hemodynamic monitoring if necessary. Crystalloids are the preferred maintenance and resuscitation fluids, while hypotonic fluids and albumin are not recommended [60]. Hypertonic saline solutions as maintenance or resuscitation fluids confer no benefit over saline or balanced solutions [61]. Concerning the management of intracranial hypertension, the choice of the “optimal” hypertonic fluid between mannitol and hypertonic saline remains uncertain; both agents showing comparable efficacy in reducing ICP in most studies

[62]. To help address this uncertainty, a multicenter comparative study is ongoing (ISRCTN16075091) [63].

Red blood cell transfusions (RBCT) are generally safe, but have a small risk of immune, hemolytic, or infectious complications. The hemoglobin (Hb) threshold to administer RBCT in patients with TBI remains controversial [64], while randomized trials have conflicting results. In the EPO Severe TBI trial ($n=200$), targeting Hb concentrations > 10 g/dL did not improve 6-month neurological outcome when compared to a restrictive strategy initiating RBCT for Hb > 7 g/dL [65]. However, in this study, Hb values of the “restrictive” control group were in the 8–9 g/dL range, thereby questioning how these findings should be interpreted and translated to clinical practice.

In contrast, in a smaller feasibility study ($n=44$), outcome (hospital mortality and 6-month neurological status) was better in the liberal (RBCT if $Hb < 9$ g/dL) than the restrictive (RBCT if $Hb < 7$ g/dL) group [66]. This controversy is reflected by variable ICU practices for RBCT [64]. While awaiting larger randomized trials, RBCT decision in severe TBI patients, may be best based on individual systemic and cerebral physiological triggers, targeted to multimodal monitoring [14, 15].

Renal complications

Acute kidney injury (AKI) occurs early after TBI, and affects around 10% of patients, with a 20% incidence of severe AKI, often requiring renal replacement therapy [67, 68]. AKI is an independent determinant of mortality and poor long-term neurological outcome [67], while severe AKI is associated with the need for tracheostomy and prolonged hospital length of stay [68]. Together with pre-existing risk factors (such as chronic renal disease and diabetes), potentially modifiable determinants of AKI are the use of mannitol [69], and the presence of hyperchloremia [70]. Whether therapeutic strategies aiming at preventing AKI in TBI patients can also improve long-term outcomes remains to be further elucidated.

At the other side of the renal function spectrum, augmented renal clearance is notably prevalent in neurocritical care and trauma patients, and should warrant particular attention to dosage of hydrophilic drugs, in particular antibiotics [71].

Nutrition and glucose control

While pre-clinical neurophysiological data are encouraging, there is no hard evidence for nutritional interventions improving outcome in TBI [72]. As such, nutritional management should prioritize the prevention of nutrition-induced harm [73]. Initiation of enteral nutrition (EN) within 48 h might reduce infectious morbidity, but not mortality, as compared to late initiation of EN and to early parenteral nutrition (PN) [74, 75]. The limited amounts of EN provided due to delayed gastric emptying -occurring particularly during therapeutic hypothermia- should raise no concern. They may be adaptive to critical illness and the reduced metabolic rate with hypothermia [73, 76].

Modest micronutrient-doses provided by standard EN-preparations might not compensate early losses or premorbid deficiencies [77]. Particularly in comatose patients, clinical hallmarks of micronutrient deficiency will be easily overlooked [78]. Strategies of early generous micronutrient administration versus targeted corrections have not been investigated after TBI [78].

Guidance on glucose control has fluctuated over the past decades. A subgroup analysis of the Leuven

landmark randomised controlled trial (RCT) reported that tight glucose control (TGC) improved short and long-term outcome in 63 patients with isolated TBI [79]. In a meta-analysis of 7 RCTs ($N=1013$) TGC beneficially impacted the occurrence of new infections, ICU length of stay and long-term neurological outcome, despite hypoglycemia occurring more often [80]. These trials, however, were mostly conducted before 2011, providing early generous EN and/or PN. In contrast, a sub-study analysis of 391 patients with TBI in the NICE-SUGAR study comparing intensive (glucose < 6 mmol/L or 106 mg/dl) versus conventional (glucose < 10 mmol/L or 180 mg/dl) glucose control found no difference in outcomes but a higher incidence of hypoglycemia in the intensive control group [81]. A meta-analysis of 10 RCTs ($N=1066$) confirmed this higher risk of severe hypoglycemia associated with intensive control, while at the same time TGC reduced the risk of poor neurological outcome, but not mortality [82]. Based on these studies, a universal glucose target is difficult to establish and TGC should probably only be performed in centers capable of performing intensive control while avoiding hypoglycemia. Else, a glucose goal that avoids hypoglycemia while targeting levels < 10 mmol/L (180 mg/dl) should be acceptable.

Early mobilization and rehabilitation

In non-brain injured critically ill patients, early mobilization in the ICU is feasible, safe, and leads to better functional and neurocognitive outcomes [83]. Early ICU mobilization in TBI patients, and severely brain-injured patients in general, remains poorly investigated. Currently, evidence from randomized controlled trials for early head-up mobilization is lacking [84], although observational data suggest a potential benefit [85], and one small prospective trial has demonstrated the feasibility [86].

Huge differences in rehabilitation referrals after severe TBI continue to exist across and within different health care systems [87], making conclusions about optimal trajectories and indications for early rehabilitation referral difficult. According to a Cochrane analysis in 2015, a limited benefit of starting rehabilitation early after TBI is suggested, while more intense programs might be associated with earlier functional gains [88].

Coagulopathy

Trauma-induced coagulopathy (TIC) is a complex multifactorial failure of hemostasis that occurs in 25% of severely injured patients and is associated with higher morbidity and a fourfold increase in mortality [89]. TIC occurs immediately after trauma and is characterized by hypofibrinogenemia, hyperfibrinolysis, systemic anticoagulation, endothelial dysfunction, and platelet

consumption and dysfunction [90]. Initial management should focus primarily at stopping eventual bleeding, in most cases from extracranial sources, and addressing the lethal triad of coagulopathy, acidosis, and hypothermia. Tranexamic acid should be administered in all bleeding multiple trauma patients, as early as possible, and within the first 3 h. In isolated TBI, the CRASH3 trial showed a reduction in TBI-related death when tranexamic acid (TXA) was administered in the subgroup of patients with mild-to-moderate TBI (Glasgow Coma Score (GCS) 9–15) within the first 3 h [91], but not in severe TBI. Moreover, a systematic review of 9 RCTs (including CRASH3) in 14,747 isolated TBI patients [92] did not find such mortality benefit of TXA (even while there was a reduction in hematoma expansion), and no increased risk of adverse events. As such, TXA is not indicated in severe isolated TBI, but can be considered in mild-to-moderate TBI, when administered within the first 3 h [93].

Early and targeted hemostatic resuscitation can be accomplished with timely and balanced use of blood components and resuscitation fluids, damage control surgery, hemostasis monitoring with viscoelastic assays, and early hemodynamic monitoring to maintain a neutral fluid balance [94]. Obviously, this is even more relevant in TBI as the progression of hemorrhagic lesions in the intracranial compartment can become life-threatening [95]. Treatment strategies for coagulopathy in TBI patients are the same as for extracranial injuries, although some experts advocate a higher platelet count (>100 G/L) [90]. Early empirical and ratio-driven blood transfusion (1:1:1) is also crucial in TBI. A recent RCT showed a decrease in mortality in TBI patients (especially those having extracranial injuries) receiving early plasma in the pre-hospital setting [96].

TBI is an independent risk factor of venous thromboembolic events (VTE). Hypercoagulability is driven by excessive thrombin generation and inflammation [89]. In the early phase, before low-molecular weight heparin (LMWH) can be started, intermittent pneumatic compression should be used for VTE prophylaxis. After 24–72 h, once hemostasis is achieved, LMWH can probably be safely initiated with no increased risk of hemorrhage provided that repeated neuroimaging shows no evidence of hematoma progression, although significant variability in the timing of LMWH initiation exists, ranging from 1 to 7 days [97].

Inflammation

Coagulation and inflammation are interrelated processes. Brain secondary insults can be triggered by the inflammatory response to TBI. Figure 2 explains the acute damage-related inflammatory molecular cascade that leads to

brain injuries worsening and extracranial complications [98]. In addition, a complex poly-antigenic response has been described in both the acute and chronic phases persisting years after injury; and acute elevation of anti-myelin associated glycopeptide (MAG) IgM autoantibodies is associated with worse outcomes [99]. The persistence of MAG IgM is associated with chronic neurofilament light level, a marker of axonal injury which has been associated with white matter neurodegeneration [43].

While this response is still incompletely understood, the quest for specific treatment addressing the inflammatory cascade has been unsuccessful to date [2], and research is still ongoing.

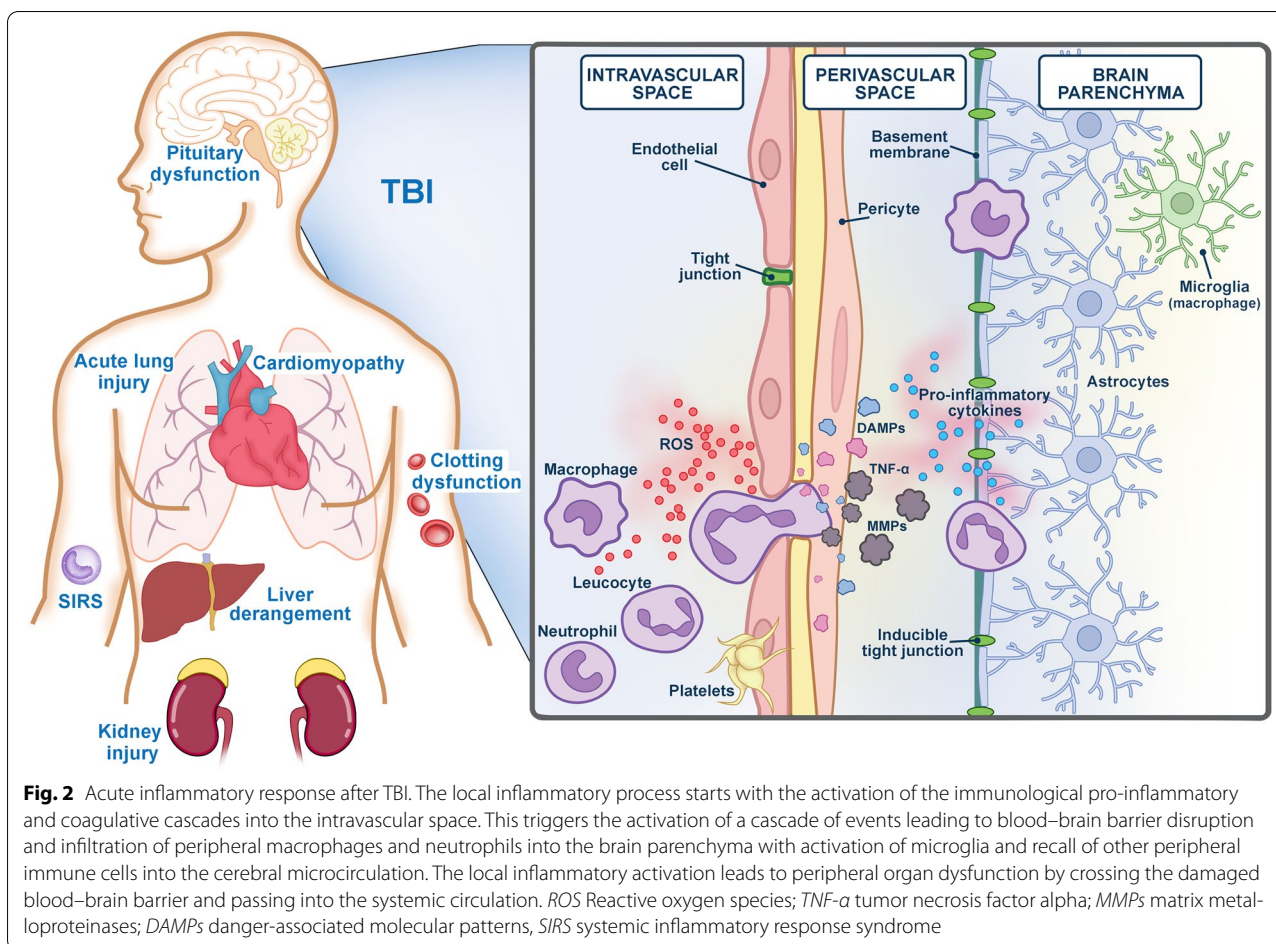
Fever is prevalent in TBI patients, occurring in up to 79% of patients [100], and can be a sign of infectious complications, or central disturbed thermoregulation. Infection management is beyond the scope of this review, but is obviously crucial. Targeted temperature management outside ICP control, aimed at avoiding fever or maintaining strict normothermia, may be neuroprotective, but evidence from interventional trials is currently lacking to demonstrate the impact of such approach on patient outcomes [101]. PbtO₂ values appear to be unaffected during episodes of fever unless hypotension is present [100].

Long-term outcome

Neuroprognostication

The ancient Hippocratic aphorism “*No head injury is too severe to despair of, nor too trivial to ignore*” still holds to this day. Unfortunately, preventable deaths in patients with head injury who “talk and die” still present, while at the other severe end of the TBI spectrum (GCS 3–5), some patients ultimately recover. Caution is advised against too early withdrawal of care. Eighty-six percent of TBI patients who die in the ICU do so following withdrawal of life-sustaining measures [102]. Withdrawal occurred within 72 h of injury in around half of the patients. This is of concern given the risk of self-fulfilling prophecies, the withdrawal of life-sustaining measures as a result of a predicted or estimated poor outcome [103], in a reality of imperfect prognostic models.

Advances in pathophysiological insight may improve prognostic modelling, while the increasing availability of big data and computational science pave the way towards more accurate prognostic estimates than can be obtained from clinical experience of physicians. Such estimates can be used to provide patients and relatives objective information on the expected outcome, to stratify patients for clinical trials, to support medical decision making and to benchmark quality of care. For predicting outcome with baseline characteristics, the IMPACT and CRASH prognostic models are robust and have been



extensively validated externally [104]. They, however, only explain 35% of variance in outcome [105]. Work is currently ongoing to update the models to current practice and to explore the added value of other predictors such as blood-based biomarkers, in-depth information from CT and magnetic resonance imaging (MRI) scans, and advanced EEG techniques. For example, the presence of deeper lesions on MRI, at the level of bilateral thalamus or brainstem, increases the risk of poor neurological outcome [106, 107]. The precise location of lesions is likely to be important; with those in the dorsal brainstem seeming to be more predictive than brainstem lesions elsewhere [108]. Diffusion MRI, a technique able to detect occult structural damage in grey and white matter not visible on conventional sequences, holds promise for predicting emergence from coma in patients with very severe TBI [109]. Advanced EEG with machine-learning techniques has been able to identify brain activation and responsiveness of comatose patients, which may potentially guide rehabilitative interventions [110]. Blood biomarkers, including neurofilament light (NFL, associated with axonal injury) and glial fibrillary acid protein (GFAP),

secreted from astrocytes and microglia after injury are associated with the burden of injury defined on CT [111]. The peak of NFL (~10 days to 6 weeks after injury) is associated with the extent of white matter neurodegeneration and functional outcome at 1 year in patients with moderate-to-severe TBI. [43]

Over the past decades, the proportion of elderly TBI patients has increased [112]. Independent from age, frailty is associated with an increased risk of unfavorable outcome, and the recently developed CENTER-TBI frailty index [113] could be helpful in stratifying elderly patients.

In the ICU setting with a rich data environment, prognostic modelling can be taken a step further to predict derangements of physiological functioning, such as increased ICP, before such derangements are clinically evident [114, 115]. Therapeutic interventions can then be initiated before critical thresholds are reached. We suggest that future research should focus on dynamic prediction modelling, incorporating new information as it becomes available over time. For high dimensional

datasets, advanced computational approaches in the field of machine learning offer opportunities.

TBI: a chronic condition?

Most of the recovery after TBI takes place in the first months, up to the first 2 years. However, substantial change can occur even as late as two decades after injury [116]. Considerable variability with regard to the trajectories of recovery exists, [117] where patients may show both improvement and deterioration in the months and years following injury [116, 118]. As mentioned above, caution is needed when predicted probabilities from prognostic tools are translated into management decisions for individual patients, even in apparently devastating injuries [119].

Although outcome is strongly dependent on the initial severity of TBI, recent literature demonstrates that even patients with mild injuries may suffer from significant long-term consequences. Incomplete recovery is often defined as a Glasgow Outcome Score-Extended (GOSE) rating of less than 8, because this means that the individual has not returned fully to normal life. At 6 months post-injury, a GOSE less than 8 has been found in more than 60% of patients presenting with a mild TBI (GCS 13–15) who met criteria for a CT scan [120]. Even in patients managed as an outpatient in the emergency department, approximately every third person has a GOSE of less than 8, at 6 months [121]. Since most TBI presents as mild, these findings point to a substantial socioeconomic burden, which is often insufficiently addressed by existing health care services. Moreover, predictive models for functional outcome and persistence of post concussive symptoms for mild TBI are particularly imprecise and need further refinement of relevant endpoints and predictors [122].

Long-term consequences after TBI also include a higher risk for developing neurological diseases including epilepsy and stroke [123]. Furthermore, TBI has been linked to cognitive deficits, often affecting executive function, working memory, leading to chronic degenerative processes. Dementia is not uncommon, [124–126] even in patients with apparently mild TBI, especially those patients with repeated concussions [125]. This is supported by long-term neuropathological studies and argues for recognizing TBI as chronic disease with life-long consequences in survivors [126].

Neurorepair: experimental therapies

Experimental efforts to promote repair in TBI have been directed towards reawakening mechanisms of neural development, to reprogram the local microenvironment from a detrimental function to a beneficial role by cell-based or gene therapy, or to promote adaptive plasticity [127]. Among cell-based therapies, mesenchymal stromal cells (MSC) are most promising. Preclinical studies have demonstrated favorable effects of MSC on favorable outcomes [128]. Clinical studies are at their infancy. Results from a first randomized phase 2 trial, testing intracerebral implantation of allogeneic modified MSC in TBI patients with chronic motor deficits, has demonstrated preliminary efficacy on motor dysfunction [129]. MSC are immune-privileged. As such, it can be envisaged that MSC from donors, can be stored as an "off the shelf" cell medicinal product, and made available to TBI patients with no delay in therapy.

The development of acellular scaffolds which are compositionally like brain extracellular matrix (ECM) is also gaining attention [130]. Chondroitin sulfate glycosaminoglycans (CS) are major constituents of the ECM and key regulators of growth factor signaling and neural stem cell homeostasis in the brain. Recent studies show that engineered CS (eCS) matrices can potentiate brain repair after TBI. Furthermore, neurotrophic factor – laden eCS matrix implants promote angiogenesis, support synaptic stability, and foster cognitive recovery, and could represent a rational approach to promote repair in TBI.

Self-repair processes occur after TBI, are stimulated by endogenous growth-related factors, and may last for weeks. However, those are usually insufficient to contrast injury progression in TBI [131]. Accordingly, providing the tissue with a milieu able to restore, replace, or regenerate injured brain and immune cells has become an important therapeutic target.

Conclusion

TBI management has changed over the past decade, from a dogmatic approach where ICP control in isolation was confused with TBI management, to a more multimodal approach, in which pathophysiological derangements are detected and treated accordingly (Table 4). Further research into these pathophysiological mechanisms is still needed, quantifying temporal relations and dependencies. Also, addressing the systemic complications of TBI, such as hypercoagulation or malnutrition, is now part of standard management protocols. Unfortunately,

Table 4 Management of severe TBI: conceptual highlights

Initial management	
Initial pre-and in-hospital resuscitation	Avoid and treat hypotension, hypoxia, anemia
Secondary injury management	
Management of elevated ICP	ICP monitoring allows to titrate therapy to severity of intracranial hypertension in severe TBI patients SIBICC algorithms provide a conceptual framework for a tiered approach Treating TBI involves more than just treating elevated ICP
Management of CPP	Optimizing brain perfusion can be challenging, and ancillary monitoring of brain tissue oxygen or cerebrovascular autoregulation may be helpful
Multimodality monitoring	Should be applied to answer a specific pathophysiological question
Extracranial complications	
Respiratory management	Lung protective ventilation is the preferred strategy Avoid hypoxia, hyperoxia, hypocapnia, hypercapnia
Fluid management	Assessment of volume status like general critically ill patients Choice of optimal hypertonic solution still uncertain
Transfusion	Variation in transfusion triggers reflects lack of evidence
Acute kidney injury	Occurs in 10% of TBI patients and is associated with poor long-term outcomes
Nutrition management	Nutrition management should prioritize the prevention of nutrition induced harm: avoid hyperglycemia, administer micronutrients early on, and delayed enteral nutrition should raise no concern
Mobilization and rehabilitation	Early mobilization is feasible, but benefit is unknown Early rehabilitation referrals might be associated with earlier functional gain
Coagulation management	TXA should be administered in all bleeding multiple trauma patients < 3 h. TXA may be considered in isolated mild-to-moderate but not severe TBI Significant variability in the timing of LMWH initiation exists. Before LMWH can be started, intermittent pneumatic compression should be applied

ICP intracranial pressure, TBI traumatic brain injury, SIBICC Seattle International Severe Traumatic Brain Injury Consensus Conference. CPP cerebral perfusion pressure, TXA tranexamic acid, LMWH low molecular weight heparin

evidence from randomized clinical trials is still lacking for many of the recommended interventions. However, the SIBICC guidelines now provide a clear standard of therapy where novel interventions can be added or be compared to.

Author details

¹ Department and Laboratory of Intensive Care Medicine, University Hospitals Leuven and KU Leuven, Leuven, Belgium. ² Université Grenoble Alpes, Inserm, U1216, CHU Grenoble Alpes, Grenoble Institut Neurosciences, Grenoble, France. ³ Department of Neurological Surgery, Department of Orthopaedic Surgery, Harborview Medical Center, University of Washington, Seattle, Washington, USA. ⁴ Anaesthesia and Critical Care Department, AP-HP, Hôpital Bicêtre, Hôpitaux Universitaires Paris Sud, Université Paris Sud, 78 rue du Général Leclerc, Le Kremlin Bicêtre 94275, France. ⁵ Department of Neurology, Neurocritical Care Unit, Innsbruck, Austria. ⁶ Department of Academic Neurosurgery, Cambridge University Hospital NHS Foundation Trust, Cambridge, UK. ⁷ Department of Neurosurgery, University Hospital Antwerp, Edegem, Belgium. ⁸ Brain and Spinal Injury Center, Department of Neurosurgery, University of California, San Francisco, San Francisco, CA, USA. ⁹ Department of Medicine, University Division of Anaesthesia, University of Cambridge, Cambridge, UK. ¹⁰ Faculty of Biology and Medicine, Université de Lausanne, Lausanne, Switzerland. ¹¹ Anesthesia and Intensive Care, Policlinico San Martino, IRCCS for Oncology and Neuroscience and Dipartimento di Scienze Chirurgiche e Diagnostiche Integrate, University of Genoa, Genova, Italy. ¹² Critical Care Medicine, Neurology, and Neurosurgery, UPMC/University of Pittsburgh School of Medicine, Pittsburgh, Pennsylvania, USA. ¹³ Neurocritical Care Unit, The National Hospital for Neurology and Neurosurgery, University College London Hospitals and National Institute for Health Research Biomedical Research Centre, London, UK. ¹⁴ Clinical Biostatistics and Medical Decision

Making, Leiden University Medical Center, Leiden, The Netherlands. ¹⁵ Fondazione IRCCS Ca' Granda Ospedale Maggiore Policlinico, Milan, Italy. ¹⁶ Department of Intensive Care, Université Libre de Bruxelles (ULB) and Laboratoire de Recherche Experimentale, Department of Intensive Care, Hôpital Erasme, Brussels, Belgium. ¹⁷ Division of Psychology, University of Stirling, Stirling, UK. ¹⁸ Laboratory of Acute Brain Injury and Therapeutic Strategies, Dept of Neuroscience, Mario Negri Institute for Pharmacological Research IRCCS, Milan, Italy. ¹⁹ School of Medicine and Surgery, University of Milano-Bicocca, Milan, Italy. ²⁰ Neurointensive Care Unit, San Gerardo Hospital, Monza, Italy.

Author contributions

All authors have contributed to sections of the text. GM has written the first draft and drafted the final manuscript. First editing was done by GC. All authors have proofread the first draft and made corrections. All authors have read and approved the final draft.

Funding

No specific funding was obtained for this manuscript. Geert Meyfroidt is supported Flemish Government (Research Foundation–Flanders (FWO)), as Senior Clinical Researcher (1843118 N) and has project funding from the KU Leuven (C24/17/072).

Declarations

Conflict of interest

MPC receives funding from the Research Foundation Flanders (FWO) (Grant No. 1832817N) and Onderzoeksraad, KU Leuven (Grant No. C24/17/070) and from the Private Charity Organization "Help Brandwonden Kids". AIRM declares receiving institutional support for CENTER-TBI from the European Union seventh Framework Program (grant 602150), and additional support from the Hannelore Kohl Stiftung (Germany), from OneMind (USA), from Integra LifeSciences Corporation (USA) and from NeuroTrauma Sciences (USA). Personal fees were received from PresuraNeuro (DSMB) and NeuroTrauma Sciences, outside the scope of this work. DKM reports grants, consultancy fees, or payment for educational activity, from NeuroTrauma Sciences LLC,

Lantmann AB, GlaxoSmithKline Ltd, Calico LLC, Cortirio Ltd, all outside the submitted work. VFJN hold a grant from Roche Pharmaceuticals related to blood biomarkers and TBI. MO is consultant and member of Scientific Advisory Board of Neuroptics. MS is Editor-in-Chief of the Journal of Neurosurgical Anesthesiology. FST received lecture fees from INTEGRA and is Advisory Board Member from Neuroptics, all outside the submitted work. GC reports grants, personal fees as Speakers' Bureau Member and Advisory Board Member from Integra and Neuroptics, all outside the submitted work. The other authors declare no conflicts of interest.

Publisher's Note

Springer Nature remains neutral with regard to jurisdictional claims in published maps and institutional affiliations.

Springer Nature or its licensor (e.g. a society or other partner) holds exclusive rights to this article under a publishing agreement with the author(s) or other rightsholder(s); author self-archiving of the accepted manuscript version of this article is solely governed by the terms of such publishing agreement and applicable law.

Received: 1 February 2022 Accepted: 9 April 2022

Published online: 20 May 2022

References

- GBD 2016 Traumatic Brain Injury and Spinal Cord Injury Collaborators. Global, regional, and national burden of traumatic brain injury and spinal cord injury, 1990–2016: a systematic analysis for the Global Burden of Disease Study 2016. *Lancet Neurol.* 2019;18(1):56–87. [https://doi.org/10.1016/S1474-4422\(18\)30415-0](https://doi.org/10.1016/S1474-4422(18)30415-0). [Erratum in: *Lancet Neurol.* 2021 Dec;20(12):e7]
- Stocchetti N, Taccone FS, Citerio G et al (2015) Neuroprotection in acute brain injury: an up-to-date review. *Crit Care* 19:186. <https://doi.org/10.1186/s13054-015-0887-8>
- Chesnut RM, Marshall LF, Klauber MR, Blunt BA, Baldwin N, Eisenberg HM, Jane JA, Marmarou A, Foulkes MA (1993) The role of secondary brain injury in determining outcome from severe head injury. *J Trauma-Inj Infect Crit Care* 34(2):216–222
- Spaite DW, Hu C, Bobrow BJ, Chikani V, Sherrill D, Barnhart B et al (2017) Mortality and prehospital blood pressure in patients with major traumatic brain injury: implications for the hypotension threshold. *JAMA Surg* 152(4):360–368
- Spahn DR, Bouillon B, Cerny V et al (2019) The European guideline on management of major bleeding and coagulopathy following trauma: fifth edition The European guideline on management of major bleeding and coagulopathy following trauma: fifth edition. *Crit Care* 23:98. <https://doi.org/10.1186/s13054-019-2347-3>
- Carney N, Totten AM, O'Reilly C, Ullman JS, Hawryluk GW, Bell MJ, Bratton SL, Chesnut R, Harris OA, Kissoon N, Rubiano AM, Shutter L, Tasker RC, Vavilala MS, Wilberger J, Wright DW, Ghajar J (2016) Guidelines for the management of severe traumatic brain injury, fourth edition. *Neurosurgery*. <https://doi.org/10.1227/NEU.0000000000001432>
- Geeraerts T, Velly L, Abdenmour L, Asehnoun K, Audibert G, Bouzat P, Bruder N, Carrillon R, Cottenceau V, Cotton F, Courtill-Teyssedre S, Dahyot-Fizelier C, Dailler F, David JS, Engrand N, Fletcher D, Francony G, Gergelé L, Ichai C, Javouhey É, Leblanc PE, Lieutaud T, Meyer P, Mirek S, Orliaguet G, Proust F, Quintard H, Ract C, Srari M, Tazarourte K, Vigué B, Payen JF, French Society of Anaesthesia; Intensive Care Medicine; in partnership with Association de neuro-anesthésie-réanimation de langue française (Anarlf); French Society of Emergency Medicine (Société Française de Médecine d'urgence (SFMU)); Société française de neurochirurgie (SFN); Groupe francophone de réanimation et d'urgences pédiatriques (GFRUP); Association des anesthésistes-réanimateurs pédiatriques d'expression française (Adarpef) (2018) Management of severe traumatic brain injury (first 24hours). *Anaesth Crit Care Pain Med* 37(2):171–186. <https://doi.org/10.1016/j.jaccpm.2017.12.001>
- Ract C, Le Moigno S, Bruder N, Vigue B (2007) Transcranial Doppler ultrasound goal-directed therapy for the early management of severe traumatic brain injury. *Intensive Care Med* 33(4):645–651
- Davis DP, Koprowicz KM, Newgard CD, Daya M, Bulger EM, Stiell I et al (2011) The relationship between out-of-hospital airway management and outcome among trauma patients with Glasgow Coma Scale Scores of 8 or less. *Prehosp Emerg Care* 15(2):184–192
- Murray GD, Butcher I, McHugh GS, Lu J, Mushkudiani NA, Maas AI et al (2007) Multivariable prognostic analysis in traumatic brain injury: results from the IMPACT study. *J Neurotrauma* 24(2):329–337
- Chesnut RM, Videtta W (2020) Situational intracranial pressure management: an argument against a fixed treatment threshold. *Crit Care Med* 48:1214–1216
- Lazaridis C, Goldenberg FD (2020) Intracranial pressure in traumatic brain injury: from thresholds to heuristics. *Crit Care Med* 48:1210–1213
- Robba C, Graziano F, Reborja P et al (2021) Intracranial pressure monitoring in patients with acute brain injury in the intensive care unit (SYNAPSE-ICU): an international, prospective observational cohort study. *Lancet Neurol* 20(7):548–558
- Hawryluk GWJ, Aguilera S, Buki A, Bulger E, Citerio G, Cooper DJ, Arrastia RD, Diringier M, Figaji A, Gao G, Geocadin R, Ghajar J, Harris O, Hoffer A, Hutchinson P, Joseph M, Kitagawa R, Manley G, Mayer S, Menon DK, Meyfroidt G, Michael DB, Oddo M, Okonkwo D, Patel M, Robertson C, Rosenfeld JV, Rubiano AM, Sahuquillo J, Servadei F, Shutter L, Stein D, Stocchetti N, Taccone FS, Timmons S, Tsai E, Ullman JS, Vespa P, Videtta W, Wright DW, Zammit C, Chesnut RM (2019) A management algorithm for patients with intracranial pressure monitoring: the Seattle International Severe Traumatic Brain Injury Consensus Conference (SIBICC). *Intensive Care Med* 45:1783–1794
- Chesnut R, Aguilera S, Buki A, Bulger E, Citerio G, Cooper DJ, Arrastia RD, Diringier M, Figaji A, Gao G, Geocadin R, Ghajar J, Harris O, Hoffer A, Hutchinson P, Joseph M, Kitagawa R, Manley G, Mayer S, Menon DK, Meyfroidt G, Michael DB, Oddo M, Okonkwo D, Patel M, Robertson C, Rosenfeld JV, Rubiano AM, Sahuquillo J, Servadei F, Shutter L, Stein D, Stocchetti N, Taccone FS, Timmons S, Tsai E, Ullman JS, Vespa P, Videtta W, Wright DW, Zammit C, Hawryluk GWJ (2020) A management algorithm for adult patients with both brain oxygen and intracranial pressure monitoring: the Seattle International Severe Traumatic Brain Injury Consensus Conference (SIBICC). *Intensive Care Med* 46:919–929
- Åkerlund CA, Donnelly J, Zeiler FA, Helbok R, Holst A, Cabeleira M et al (2020) Impact of duration and magnitude of raised intracranial pressure on outcome after severe traumatic brain injury: a center-tbi high-resolution group study. *PLoS ONE* 15:e0243427
- Güiza F, Depreitere B, Piper I et al (2015) Visualizing the pressure and time burden of intracranial hypertension in adult and paediatric traumatic brain injury. *Intensive Care Med* 41:1067–1076. <https://doi.org/10.1007/s00134-015-3806-1>
- Launey Y, Fryer TD, Hong YT, Steiner LA, Nortje J, Veenith TV, Hutchinson PJ, Ercole A, Gupta AK, Aigbirhio FI, Pickard JD, Coles JP, Menon DK (2020) Spatial and temporal pattern of ischemia and abnormal vascular function following traumatic brain injury. *JAMA Neurol* 77(3):339–349
- Hermanides J, Hong YT, Trivedi M, Outtrim JG, Aigbirhio FI, Nestor PJ, Guilfoyle M, Winzeck S, Newcombe SFJ, Das T, Correia MM, Carpenter KLH, Hutchinson PJA, Gupta AK, Fryer TD, Pickard JD, Menon DK, Coles JP (2021) Metabolic derangements are associated with impaired glucose delivery following traumatic brain injury. *Brain*. <https://doi.org/10.1093/brain/awab255>
- Calviello LA, Donnelly J, Zeiler FA, Thelin EP, Smielewski P, Czosnyka M (2017) Cerebral autoregulation monitoring in acute traumatic brain injury: what's the evidence? *Minerva Anestesiol* 83(8):844–857. <https://doi.org/10.23736/S0375-9393.17.12043-2>
- Brain Trauma Foundation, American Association of Neurological Surgeons, Congress of Neurological Surgeons, Joint Section on Neurotrauma Critical Care—AANS CNS, Bratton SL, Chesnut RM, Ghajar J, McConnell Hammond FF, Harris OA, Hartl R, Manley GT, Nemecek A, Newell DW, Rosenthal G, Schouten J, Shutter L, Timmons SD, Ullman JS, Videtta W, Wilberger JE, Wright DW (2007) Guidelines for the management of severe traumatic brain injury. *J Neurotrauma* 24(Suppl 1):S1–106
- Sorrentino E, Diedler J, Kasprowicz M, Budohoski KP, Haubrich C, Smielewski P, Outtrim JG, Manktelow A, Hutchinson PJ, Pickard JD, Menon DK, Czosnyka M (2012) Critical thresholds for cerebrovascular reactivity after traumatic brain injury. *Neurocrit Care* 16(2):258–266. <https://doi.org/10.1007/s12028-011-9630-8>

23. Tas J, Beqiri E, van Kaam RCR, Czosnyka M, Donnelly J, Haeren RH, van der Horst ICC, Hutchinson PJAH, van Kuijk SMJ, Liberti AL, Menon DK, Hoedemaekers CWE, Depreitere B, Smielewski P, Meyfroidt G, Ercole A, Aries MJH (2021) Targeting autoregulation-guided cerebral perfusion pressure after traumatic brain injury (COGITATE): a feasibility randomized controlled clinical trial. *J Neurotrauma* 38(20):2790–2800
24. Klein SP, Depreitere B, Meyfroidt G (2019) How I monitor cerebral autoregulation. *Crit Care* 23(1):160. <https://doi.org/10.1186/s13054-019-2454-1>
25. Smith M, Maas AIR (2019) An algorithm for patients with intracranial pressure monitoring: filling the gap between evidence and practice. *Intensive Care Med* 45:1819–1821
26. Wiegers EJA, Lingsma HF, Huijben JA, Cooper DJ, Citerio G, Frisvold S, Helbok R, Maas AIR, Menon DK, Moore EM, Stocchetti N, Dippel DW, Steyerberg EW, van der Jagt M, CENTER-TBI; OzENTER-TBI Collaboration Groups (2021) Fluid balance and outcome in critically ill patients with traumatic brain injury (CENTER-TBI and OzENTER-TBI): a prospective, multicentre, comparative effectiveness study. *Lancet Neurol* 20(8):627–638. [https://doi.org/10.1016/S1474-4422\(21\)00162-9](https://doi.org/10.1016/S1474-4422(21)00162-9)
27. Huijben JA, Volovici V, Cnossen MC, Haitsma IK, Stocchetti N, Maas AIR, Menon DK, Ercole A, Citerio G, Nelson D, Polinder S, Steyerberg EW, Lingsma HF, van Jagt M, CENTER-TBI investigators and participants (2018) Variation in general supportive and preventive intensive care management of traumatic brain injury: a survey in 66 neurotrauma centers participating in the Collaborative European NeuroTrauma Effectiveness Research in Traumatic Brain Injury (CENTER-TBI) study. *Crit Care* 22(1):90
28. Castle-Kirschbaum M, Parkin WG, Goldschlager T, Lewis PM (2021) Cardiac output and cerebral blood flow: a systematic review of cardio-cerebral coupling. *J Neurosurg Anesthesiol*. <https://doi.org/10.1097/ANA.0000000000000768>
29. Thorup L, Koch KU, Upton RN, Østergaard L, Rasmussen M (2020) Effects of vasopressors on cerebral circulation and oxygenation: a narrative review of pharmacodynamics in health and traumatic brain injury. *J Neurosurg Anesthesiol* 32(1):18–28
30. Steiner LA, Siegemund M (2019) Vasoactive agents to improve brain perfusion: pathophysiology and clinical utilization. *Curr Opin Crit Care* 25(2):110–116
31. Steiner LA, Johnston AJ, Czosnyka M, Chatfield DA, Salvador R, Coles JP, Gupta AK, Pickard JD, Menon DK (2004) Direct comparison of cerebrovascular effects of norepinephrine and dopamine in head-injured patients. *Crit Care Med* 32(4):1049–1054
32. Bouras M, Roquilly A, Mahé PJ, Cinotti R, Vourc'h M, Perrot B, Bach-Ngohou K, Masson D, Asehnoune K (2019) Cortisol total/CRP ratio for the prediction of hospital-acquired pneumonia and initiation of corticosteroid therapy in traumatic brain-injured patients. *Crit Care* 23(1):394
33. Depreitere B, Meyfroidt G, Guiza F (2018) What do we mean by cerebral perfusion pressure? *Acta Neurochir Suppl* 126:201–203
34. Le Roux P, Menon DK, Citerio G, Vespa P, Bader MK, Brophy GM, Diringier MN, Stocchetti N, Videtta W, Armonda R, Badjatia N, Böesel J, Chesnut R, Chou S, Claassen J, Czosnyka M, De Georgia M, Figaji A, Fugate J, Helbok R, Horowitz D, Hutchinson P, Kumar M, McNett M, Miller C, Naidech A, Oddo M, Olson D, O'Phelan K, Provencio JJ, Puppo C, Riker R, Robertson C, Schmidt M, Taccone F, Neurocritical Care Society; European Society of Intensive Care Medicine (2014) Consensus summary statement of the International Multidisciplinary Consensus Conference on Multimodality Monitoring in Neurocritical Care: a statement for healthcare professionals from the Neurocritical Care Society and the European Society of Intensive Care Medicine. *Intensive Care Med* 40(9):1189–1209
35. Stiefel MF, Spiotta A, Gracias VH, Garuffe AM, Guillaumondegui O, Maloney-Wilensky E, Bloom S, Grady MS, LeRoux PD (2005) Reduced mortality rate in patients with severe traumatic brain injury treated with brain tissue oxygen monitoring. *J Neurosurg* 103(5):805–811
36. Spiotta AM, Stiefel MF, Gracias VH, Garuffe AM, Kofke WA, Maloney-Wilensky E, Troxel AB, Levine JM, Le Roux PD (2010) Brain tissue oxygen-directed management and outcome in patients with severe traumatic brain injury. *J Neurosurg* 113(3):571–580. <https://doi.org/10.3171/2010.1.JNS09506>
37. Okonkwo DO, Shutter LA, Moore C, Temkin NR, Puccio AM, Madden CJ, Andaluz N, Chesnut RM, Bullock MR, Grant GA, McGregor J, Weaver M, Jallo J, LeRoux PD, Moberg D, Barber J, Lazaridis C, Diaz-Arrastia RR (2017) Brain oxygen optimization in severe traumatic brain injury phase-II: A PHASE II RANDOMIZED TRIAL. *Crit Care Med* 45(11):1907–1914
38. BOOST-3 | SIREN [Internet] (2021). <https://siren.network/clinical-trials/boost-3>. Accessed 10 Dec 2021
39. BONANZA-ANZICS [Internet] (2021). <https://www.anzics.com.au/current-active-endorsed-research/bonanza/>. Accessed 10 Dec 2021
40. Payen J-F, Richard M, Francony G et al (2020) Comparison of strategies for monitoring and treating patients at the early phase of severe traumatic brain injury: the multicentre randomised controlled OXY-TC trial study protocol. *BMJ Open* 10:e040550
41. Timofeev I, Carpenter KL, Nortje J, Al-Rawi PG, O'Connell MT, Czosnyka M, Smielewski P, Pickard JD, Menon DK, Kirkpatrick PJ, Gupta AK, Hutchinson PJ (2011) Cerebral extracellular chemistry and outcome following traumatic brain injury: a microdialysis study of 223 patients. *Brain* 134(Pt 2):484–494. <https://doi.org/10.1093/brain/awq353>
42. Hutchinson PJ, Jalloh I, Helmy A, Carpenter KL, Rostami E, Bellander BM, Boutelle MG, Chen JW, Claassen J, Dahyot-Fizelier C, Enblad P, Gallagher CN, Helbok R, Hillered L, Le Roux PD, Magnoni S, Mangat HS, Menon DK, Nordström CH, O'Phelan KH, Oddo M, Perez Barcena J, Robertson C, Ronne-Engström E, Sahuquillo J, Smith M, Stocchetti N, Belli A, Carpenter TA, Coles JP, Czosnyka M, Dizard N, Goodman JC, Gupta AK, Nielsen TH, Marklund N, Montcriol A, O'Connell MT, Poca MA, Sarrafzadeh A, Shannon RJ, Skjoth-Rasmussen J, Smielewski P, Stover JF, Timofeev I, Vespa P, Zavala E, Ungerstedt U (2015) Consensus statement from the 2014 International Microdialysis Forum. *Intensive Care Med* 41(9):1517–1528. <https://doi.org/10.1007/s00134-015-3930-y> PMID: 26194024; PMCID: PMC4550654
43. Graham NSN, Zimmerman KA, Moro F, Heslegrave A, Maillard SA, Bernini A, Miroz JP, Donat CK, Lopez MY, Bourke N, Jolly AE, Mallas EJ, Soreq E, Wilson MH, Fatania G, Roi D, Patel MC, Garbero E, Nattino G, Baciu C, Fainardi E, Chieriegato A, Gradisek P, Magnoni S, Oddo M, Zetterberg H, Bertolini G, Sharp DJ (2021) Axonal marker neurofilament light predicts long-term outcomes and progressive neurodegeneration after traumatic brain injury. *Sci Transl Med* 13(613):eabg9922. <https://doi.org/10.1126/scitranslmed.abg9922>
44. Morelli P, Oddo M, Ben-Hamouda N (2019) Role of automated pupillometry in critically ill patients. *Minerva Anestesiol* 85:995–1002
45. Martínez-Ricarte F, Castro A, Poca MA, Sahuquillo J, Expósito L, Arribas M et al (2013) Infrared pupillometry. Basic principles and their application in the non-invasive monitoring of neurocritical patients. *Neurologia* 28:41–51
46. Kerr RG, Bacon AM, Baker LL, Gehrke JS, Hahn KD, Lillegraven CL et al (2016) Underestimation of pupil size by critical care and neurosurgical nurses. *Am J Crit Care* 25:213–219
47. Meeker M, Du R, Bacchetti P, Privitera CM, Larson MD, Holland MC et al (2005) Pupil examination: validity and clinical utility of an automated pupillometer. *J Neurosci Nurs* 37:34–40
48. Robba C, Pozzebon S, Moro B, Vincent JL, Creteur J, Taccone FS (2020) Multimodal non-invasive assessment of intracranial hypertension: an observational study. *Crit Care* 24:379
49. Oddo M, Taccone F, Galimberti S, Rebora P, Citerio G (2021) Outcome Prognostication of Acute Brain Injury using the Neurological Pupil Index (ORANGE) study: protocol for a prospective, observational, multicentre, international cohort study. *BMJ Open*. <https://doi.org/10.1136/bmjopen-2020-046948>
50. Oddo M, Sandroni C, Citerio G, Miroz JP, Horn J, Rundgren M, Cariou A, Payen JF, Storm C, Stammet P, Taccone FS (2018) Quantitative versus standard pupillary light reflex for early prognostication in comatose cardiac arrest patients: an international prospective multicenter double-blinded study. *Intensive Care Med* 44(12):2102–2111
51. Robba C, Goffi A, Geeraerts T, Cardim D, Via G, Czosnyka M, Park S, Sarwal A, Padayachy L, Rasulo F, Citerio G (2019) Brain ultrasonography: methodology, basic and advanced principles and clinical applications. A narrative review. *Intensive Care Med* 45(7):913–927
52. Robba C, Santori G, Czosnyka M, Corradi F, Bragazzi N, Padayachy L et al (2018) Optic nerve sheath diameter measured sonographically as non-invasive estimator of intracranial pressure: a systematic review and meta-analysis. *Intensive Care Med* 44:1284–1294
53. Rasulo FA, Bertuetti R, Robba C, Lusenti F, Cantoni A, Bernini M et al (2017) The accuracy of transcranial Doppler in excluding intracranial

- hypertension following acute brain injury: a multicenter prospective pilot study. *Crit Care* 21:44
54. Vespa PM, Nuwer MR, Nenov V et al (1999) Increased incidence and impact of nonconvulsive and convulsive seizures after traumatic brain injury as detected by continuous electroencephalographic monitoring. *J Neurosurg* 91:750–760
 55. Dreier JP, Fabricius M, Ayata C, Sakowitz OW, Shuttleworth CW, Dohmen C et al (2017) Recording, analysis, and interpretation of spreading depolarizations in neurointensive care: Review and recommendations of the cosbid research group. *J Cereb Blood Flow Metab* 37:1595–1625
 56. Robba C, Rebora P, Banzato E, Wieggers EJA, Stocchetti N, Menon DK, Citerio G, Collaborative European NeuroTrauma Effectiveness Research in Traumatic Brain Injury Participants and Investigators (2020) Incidence, risk factors, and effects on outcome of ventilator-associated pneumonia in patients with traumatic brain injury: analysis of a large, multicenter, prospective, observational longitudinal study. *Chest* 158(6):2292–2303. <https://doi.org/10.1016/j.chest.2020.06.064>
 57. Robba C, Poole D, McNett M, Asehnoune K, Bösel J, Bruder N et al (2020) Mechanical ventilation in patients with acute brain injury: recommendations of the European Society of Intensive Care Medicine consensus. *Intensive Care Med* 46:2397–2410
 58. Dauwe DF, Gunst J, Vlasselaers D, Meyfroidt G (2021) Propofol-infusion syndrome in traumatic brain injury: consider the ECMO option. *Intensive Care Med* 47(1):127–129. <https://doi.org/10.1007/s00134-020-06280-3>
 59. Citerio G, Robba C, Rebora P et al (2021) Management of arterial partial pressure of carbon dioxide in the first week after traumatic brain injury: results from the CENTER-TBI study. *Intensive Care Med* 47:961–973. <https://doi.org/10.1007/s00134-021-06470-7>
 60. Oddo M, Poole D, Helbok R, Meyfroidt G, Stocchetti N, Bouzat P, Cecconi M, Geeraerts T, Martin-Loeches I, Quintard H, Taccone FS, Geocadin RG, Hemphill C, Ichai C, Menon D, Payen JF, Perner A, Smith M, Suarez J, Videtta W, Zanier ER, Citerio G (2018) Fluid therapy in neurointensive care patients: ESICM consensus and clinical practice recommendations. *Intensive Care Med* 44(4):449–463
 61. Roquilly A, Moyer JD, Huet O, Lasocki S, Cohen B, Dahyot-Fizelier C, Chalard K, Seguin P, Jeantrelle C, Vermeersch V, Gaillard T, Cinotti R, Demeure Dit Latte D, Mahe PJ, Vourc'h M, Martin FP, Chopin A, Lerebourg C, Flet L, Chiffolleau A, Feuillet F, Asehnoune K (2021) Effect of continuous infusion of hypertonic saline vs standard care on 6-month neurological outcomes in patients with traumatic brain injury: the COBI randomized clinical trial. *JAMA* 325(20):2056–2066. <https://doi.org/10.1001/jama.2021.5561>
 62. Poole D, Citerio G, Helbok R, Ichai C, Meyfroidt G, Oddo M, Payen J-F, Stocchetti N (2020) Evidence for mannitol as an effective agent against intracranial hypertension: an individual patient data meta-analysis. *Neurocrit Care* 32(1):252–261
 63. Rowland MJ, Veenith T, Scomparin C et al (2019) Sugar or Salt (“SOS”): a protocol for a UK multicentre randomised trial of mannitol and hypertonic saline in severe traumatic brain injury and intracranial hypertension. *medRxiv*. <https://doi.org/10.1101/19008276>
 64. Huijben JA, van der Jagt M, Cnossen MC, Kruij MJHA, Haitsma IK, Stocchetti N, Maas AIR, Menon DK, Ercole A, Maegele M, Stanworth SJ, Citerio G, Polinder S, Steyerberg EW, Lingsma HF, CENTER-TBI Investigators and Participants (2018) Variation in blood transfusion and coagulation management in traumatic brain injury at the intensive care unit: a survey in 66 neurotrauma centers participating in the Collaborative European Neuro Trauma Effectiveness Research in Traumatic Brain Injury Study. *J Neurotrauma* 35(2):323–332. <https://doi.org/10.1089/neu.2017.5194>
 65. Robertson CS, Hannay HJ, Yamal JM, Gopinath S, Goodman JC, Tilley BC, Epo Severe TBI Trial Investigators, Baldwin A, Rivera-Lara L, Saucedo-Crespo H, Ahmed O, Sadasivan S, Ponce L, Cruz-Navarro J, Shahin H, Aisiku IP, Doshi P, Valadka A, Neipert L, Waguspak JM, Rubin ML, Benoit JS, Swank P (2014) Effect of erythropoietin and transfusion threshold on neurological recovery after traumatic brain injury: a randomized clinical trial. *JAMA* 312(1):36–47
 66. Gobatto ALN, Link MA, Solla DJ, Bassi E, Tierno PF, Paiva W, Taccone FS, Malbouisson LM (2019) Transfusion requirements after head trauma: a randomized feasibility controlled trial. *Crit Care* 23(1):89
 67. Robba C, Banzato E, Rebora P, Iaquaniello C, Huang CY, Wieggers EJA, Meyfroidt G, Citerio G, Collaborative European NeuroTrauma Effectiveness Research in Traumatic Brain Injury (CENTER-TBI) ICU Participants and Investigators (2021) Acute kidney injury in traumatic brain injury patients: results from the Collaborative European NeuroTrauma Effectiveness Research in Traumatic Brain Injury Study. *Crit Care Med* 49(1):112–126
 68. Luu D, Komisarow J, Mills BM, Vavilala MS, Laskowitz DT, Mathew J, James ML, Hernandez A, Sampson J, Fuller M, Ohnuma T, Raghunathan K, Privratsky J, Bartz R, Krishnamoorthy V (2021) Association of severe acute kidney injury with mortality and healthcare utilization following isolated traumatic brain injury. *Neurocrit Care*. <https://doi.org/10.1007/s12028-020-01183-z>
 69. Skrifvars MB, Bailey M, Moore E, Mårtensson J, French C, Presneill J, Nichol A, Little L, Duranteau J, Huet O, Haddad S, Arabi YM, McArthur C, Cooper DJ, Bendel S, Bellomo R, Erythropoietin in Traumatic Brain Injury (EPO-TBI) Investigators and the Australian and New Zealand Intensive Care Society (ANZICS) Clinical Trials Group (2021) A post hoc analysis of osmotherapy use in the erythropoietin in traumatic brain injury study—associations with acute kidney injury and mortality. *Crit Care Med* 49(4):e394–e403
 70. Yamane DP, Maghami S, Graham A, Vaziri K, Davison D (2020) Association of hyperchloremia and acute kidney injury in patients with traumatic brain injury. *J Intensive Care Med* 7:885066620978735. <https://doi.org/10.1177/0885066620978735>
 71. Hefny F, Stuart A, Kung JY, Mahmoud SH (2022) Prevalence and risk factors of augmented renal clearance: a systematic review and meta-analysis. *Pharmaceutics* 14(2):445. <https://doi.org/10.3390/pharmaceutics14020445>
 72. McGeown JP, Hume PA, Theadom A, Quarrie KL, Borotkanics R (2021) Nutritional interventions to improve neurophysiological impairments following traumatic brain injury: a systematic review. *J Neurosci Res* 99(2):573–603
 73. Singer P, Blaser AR, Berger MM, Alhazzani W, Calder PC, Casaer MP, Hiesmayr M, Mayer K, Montejó JC, Pichard C et al (2018) ESPEN guideline on clinical nutrition in the intensive care unit. *Clin Nutr*. <https://doi.org/10.1016/j.clnu.2018.08.037>
 74. Ohbe H, Jo T, Matsui H, Fushimi K, Yasunaga H (2020) Early enteral nutrition in patients with severe traumatic brain injury: a propensity score-matched analysis using a nationwide inpatient database in Japan. *Am J Clin Nutr* 111(2):378–384
 75. Reintam BA, Starkopf J, Alhazzani W, Berger MM, Casaer MP, Deane AM, Fruhwald S, Hiesmayr M, Ichai C, Jakob SM et al (2017) Early enteral nutrition in critically ill patients: ESICM clinical practice guidelines. *Intensive Care Med* 43(3):380–398
 76. Ridley EJ, Davies AR, Bernard S, McArthur C, Murray L, Paul E, Trapani A, Cooper DJ, Group ACT (2021) Measured energy expenditure in mildly hypothermic critically ill patients with traumatic brain injury: a sub-study of a randomized controlled trial. *Clin Nutr* 40(6):3875–3882
 77. Casaer MP, Bellomo R (2019) Micronutrient deficiency in critical illness: an invisible foe? *Intensive Care Med* 45(8):1136–1139
 78. Vankrunkelsven W, Gunst J, Amrein K, Bear DE, Berger MM, Christopher KB, Fuhrmann V, Hiesmayr M, Ichai C, Jakob SM et al (2020) Monitoring and parenteral administration of micronutrients, phosphate, and magnesium in critically ill patients: the VITA-TRACE survey. *Clin Nutr* 39(5):1671–1680
 79. Van den Berghe G, Schoonheydt K, Becx P, Bruyninckx F, Wouters PJ (2005) Insulin therapy protects the central and peripheral nervous system of intensive care patients. *Neurology* 64(8):1348–1353
 80. Zhu C, Chen J, Pan J, Qiu Z, Xu T (2018) Therapeutic effect of intensive glycemic control therapy in patients with traumatic brain injury: a systematic review and meta-analysis of randomized controlled trials. *Medicine (Baltimore)* 97(30):e11671
 81. Australian and New Zealand Intensive Care Society Clinical Trials Group and the Canadian Critical Care Trials Group, Finfer S, Chittock D, Li Y, Foster D, Dhingra V, Bellomo R, Cook D, Dodek P, Hebert P, Henderson W, Heyland D, Higgins A, McArthur C, Mitchell I, Myburgh J, Robinson B, Ronco J (2015) Intensive versus conventional glucose control in critically ill patients with traumatic brain injury: long-term follow-up of a subgroup of patients from the NICE-SUGAR study. *Intensive Care Med* 41(6):1037–1047. <https://doi.org/10.1007/s00134-015-3757-6>

82. Hermanides J, Plummer MP, Finnis M, Deane AM, Coles JP, Menon DK (2018) Glycaemic control targets after traumatic brain injury: a systematic review and meta-analysis. *Crit Care* 22(1):11. <https://doi.org/10.1186/s13054-017-1883-y>
83. Schweickert WD, Pohlman MC, Pohlman AS, Nigos C, Pawlik AJ, Esbrook CL, Spears L, Miller M, Franczyk M, Deprizio D, Schmidt GA, Bowman A, Barr R, McCallister KE, Hall JB, Kress JP (2009) Early physical and occupational therapy in mechanically ventilated, critically ill patients: a randomised controlled trial. *Lancet* 373(9678):1874–1882
84. Riberholt CG, Wagner V, Lindschou J, Gluud C, Mehlsen J, Møller K (2020) Early head-up mobilisation versus standard care for patients with severe acquired brain injury: a systematic review with meta-analysis and Trial Sequential Analysis. *PLoS ONE* 15(8):e0237136
85. Bartolo M, Bargellesi S, Castioni CA, Intiso D, Fontana A, Copetti M, Scarponi F, Bonaiuti D, Intensive Care and Neurorehabilitation Italian Study Group (2017) Mobilization in early rehabilitation in intensive care unit patients with severe acquired brain injury: an observational study. *J Rehabil Med* 49(9):715–722. <https://doi.org/10.2340/16501977-2269>
86. Riberholt CG, Olsen MH, Søndergaard CB, Gluud C, Ovesen C, Jakobsen JC, Mehlsen J, Møller K (2021) Early orthostatic exercise by head-up tilt with stepping vs. standard care after severe traumatic brain injury is feasible. *Front Neurol* 12:626014
87. Borgen IMH, Røe C, Brunborg C, Tenovu O, Azouvi P, Dawes H, Majdan M, Ranta J, Rusnak M, Wieggers EJA, Tverdal C, Jacob L, Cogné M, von Steinbuechel N, Andelic N (2021) Care transitions in the first 6 months following traumatic brain injury: lessons from the CENTER-TBI study. *Ann Phys Rehabil Med* 64(6):101458
88. Turner-Stokes L, Pick A, Nair A, Disler PB, Wade DT (2015) Multi-disciplinary rehabilitation for acquired brain injury in adults of working age. *Cochrane Database Syst Rev* 12:CD004170
89. Kornblith LZ, Moore HB, Cohen MJ (2019) Trauma-induced coagulopathy: the past, present, and future. *J Thromb Haemost* 17(6):852–862
90. Moore EE, Moore HB, Kornblith LZ, Neal MD, Hoffman M, Mutch NJ et al (2021) Trauma-induced coagulopathy. *Nat Rev Dis Primers* 7(1):30
91. CRASH-3 Trial Collaborators (2019) Effects of tranexamic acid on death, disability, vascular occlusive events, and other morbidities in patients with acute traumatic brain injury (CRASH-3): a randomised, placebo-controlled trial. *Lancet* 394(10210):1713–1723
92. Lawati KA, Sharif S, Maqbal SA et al (2021) Efficacy and safety of tranexamic acid in acute traumatic brain injury: a systematic review and meta-analysis of randomized-controlled trials. *Intensive Care Med* 47:14–27. <https://doi.org/10.1007/s00134-020-06279-w>
93. Taccone FS, Citerio G, Stocchetti N (2020) Is tranexamic acid going to CRASH the management of traumatic brain injury? *Intensive Care Med* 46:1261–1263. <https://doi.org/10.1007/s00134-019-05879-5>
94. Spahn DR, Bouillon B, Cerny V, Duranteau J, Filipescu D, Hunt BJ et al (2019) The European guideline on management of major bleeding and coagulopathy following trauma: fifth edition. *Crit Care* 23(1):98
95. Maegele M, Schöchl H, Menovsky T, Maréchal H, Marklund N, Buki A et al (2017) Coagulopathy and haemorrhagic progression in traumatic brain injury: advances in mechanisms, diagnosis, and management. *Lancet Neurol* 16(8):630–647
96. Gruen DS, Guyette FX, Brown JB, Okonkwo DO, Puccio AM, Campwala IK et al (2020) Association of prehospital plasma with survival in patients with traumatic brain injury: a secondary analysis of the PAMPer Cluster Randomized Clinical Trial. *JAMA Netw Open* 3(10):e2016869
97. Jamjoom AAB, Chari A, Saljevska J, Meacher R, Brennan P, Statham P (2016) A national survey of thromboprophylaxis in traumatic brain injury in the United Kingdom. *Br J Neurosurg* 30(2):240–245
98. Robba C, Bonatti G, Pelosi P, Citerio G (2020) Extracranial complications after traumatic brain injury: targeting the brain and the body. *Curr Opin Crit Care*. <https://doi.org/10.1097/MCC.0000000000000707>
99. Needham EJ, Stoevesandt O, Thelin EP, Zetterberg H, Zanier ER, Al Nimer F, Ashton NJ, Outtrim JG, Newcombe VFJ, Mousa HS, Simrén J, Blennow K, Yang Z, Hutchinson PJ, Piehl F, Helmy AE, Taussig MJ, Wang KKW, Jones JL, Menon DK, Coles AJ (2021) Complex autoantibody responses occur following moderate to severe traumatic brain injury. *J Immunol* 207(1):90–100. <https://doi.org/10.4049/jimmunol.2001309>
100. Rass V, Huber L, Janosi B-A et al (2021) The effect of temperature increases on brain tissue oxygen tension in patients with traumatic brain injury: a Collaborative European NeuroTrauma Effectiveness Research in Traumatic Brain Injury Substudy. *Ther Hypothermia Temp Manag* 11:122–131
101. Yokobori S, Yokota H (2016) Targeted temperature management in traumatic brain injury. *J Intensive Care* 4:28. <https://doi.org/10.1186/s40560-016-0137-4>
102. van Veen E, van der Jagt M, Citerio G, Stocchetti N, Gommers D, Burdorf A, Menon DK, Maas AIR, Kompanje EJO, Lingsma HF, CENTER-TBI investigators and participants (2021) Occurrence and timing of withdrawal of life-sustaining measures in traumatic brain injury patients: a CENTER-TBI study. *Intensive Care Med*. <https://doi.org/10.1007/s00134-021-06484-1>
103. Izzy S, Compton R, Carandang R et al (2013) Self-fulfilling prophecies through withdrawal of care: do they exist in traumatic brain injury, too? *Neurocrit Care* 19:347–363. <https://doi.org/10.1007/s12028-013-9925-z>
104. Dijkland SA, Foks KA, Polinder S, Dippel DWJ, Maas AIR, Lingsma HF, Steyerberg EW (2020) Prognosis in moderate and severe traumatic brain injury: a systematic review of contemporary models and validation studies. *J Neurotrauma* 37(1):1–13. <https://doi.org/10.1089/neu.2019.6401>
105. Lingsma HF, Roozenbeek B, Steyerberg EW, Murray GD, Maas AI (2010) Early prognosis in traumatic brain injury: from prophecies to predictions. *Lancet Neurol* 9(5):543–554. [https://doi.org/10.1016/S1474-4422\(10\)70065-X](https://doi.org/10.1016/S1474-4422(10)70065-X)
106. Hagbayan H, Boutin A, Laflamme M, Lauzier F, Shemilt M, Moore L, Zarychanski R, Douville V, Fergusson D, Turgeon AF (2017) The prognostic value of MRI in moderate and severe traumatic brain injury: a systematic review and meta-analysis. *Crit Care Med* 45(12):e1280–e1288. <https://doi.org/10.1097/CCM.0000000000002731>
107. Moe HK, Follestad T, Andelic N, Håberg AK, Flusund AH, Kvstad KA, Saksvoll EH, Olsen Ø, Abel-Grüner S, Sandrød O, Skandsen T, Vik A, Moen KG (2020) Traumatic axonal injury on clinical MRI: association with the Glasgow Coma Scale score at scene of injury or at admission and prolonged posttraumatic amnesia. *J Neurosurg*. <https://doi.org/10.3171/2020.6.JNS.20112>
108. Izzy S, Mazwi NL, Martinez S, Spencer CA, Klein JP, Parikh G, Glenn MB, Greenberg SM, Greer DM, Wu O, Edlow BL (2017) Revisiting grade 3 diffuse axonal injury: not all brainstem microbleeds are prognostically equal. *Neurocrit Care* 27(2):199–207. <https://doi.org/10.1007/s12028-017-0399-2>
109. Puybasset L, Perlberg V, Unrug J, Cassereau D, Galanaud D, Torkomian G, Battisti V, Lefort M, Velly L, Degos V, Citerio G, Bayen E, Pelegrini-Issac M, MRI-COMA Investigators CENTER-TBI MRI Participants and MRI Only Investigators (2022) Prognostic value of global deep white matter DTI metrics for 1-year outcome prediction in ICU traumatic brain injury patients: an MRI-COMA and CENTER-TBI combined study. *Intensive Care Med*. <https://doi.org/10.1007/s00134-021-06583-z>
110. Claassen J, Doyle K, Matory A, Couch C, Burger KM, Velazquez A, Okonkwo JU, King JR, Park S, Agarwal S, Roh D, Meghiani M, Eliseyev A, Connolly ES, Rohaut B (2019) Detection of brain activation in unresponsive patients with acute brain injury. *N Engl J Med* 380(26):2497–2505
111. Whitehouse DP, Monteiro M, Czeiter E, Vyvere TV, Valerio F, Ye Z, Amrein K, Kamnitsas K, Xu H, Yang Z, Verheyden J, Das T, Kornaropoulos EN, Steyerberg E, Maas AIR, Wang KKW, Büki A, Glocker B, Menon DK, Newcombe VFJ, CENTER-TBI Participants and Investigators (2022) Relationship of admission blood proteomic biomarkers levels to lesion type and lesion burden in traumatic brain injury: a CENTER-TBI study. *EBioMedicine* 75:103777. <https://doi.org/10.1016/j.ebiom.2021.103777>
112. Depreitere B, Meyfroidt G, Roosen G, Ceuppens J, Grandas FG (2012) Traumatic brain injury in the elderly: a significant phenomenon. *Acta Neurochir Suppl* 114:289–294. https://doi.org/10.1007/978-3-7091-0956-4_56
113. Galimberti S, Graziano F, Maas AIR, Isernia G, Lecky F, Jain S, Sun X, Gardner RC, Taylor SR, Markowitz AJ, Manley GT, Valsecchi MG, Bellelli G, Citerio G (2022) Effect of frailty on 6-month outcome after traumatic brain injury: a multicentre cohort study with external validation. *Lancet Neurol* 21(2):153–162. [https://doi.org/10.1016/S1474-4422\(21\)00374-4](https://doi.org/10.1016/S1474-4422(21)00374-4)
114. Güiza F, Depreitere B, Piper I, Van den Bergh G, Meyfroidt G (2013) Novel methods to predict increased intracranial pressure during intensive care and long-term neurologic outcome after traumatic brain injury: development and validation in a multicenter dataset. *Crit Care Med* 41(2):554–564. <https://doi.org/10.1097/CCM.0b013e3182742d0a>

115. Carra G, Güiza F, Depreitere B, Meyfroidt G, CENTER-TBI High-Resolution ICU (HR ICU) Sub-Study Participants and Investigators (2021) Prediction model for intracranial hypertension demonstrates robust performance during external validation on the CENTER-TBI dataset. *Intensive Care Med* 47(1):124–126. <https://doi.org/10.1007/s00134-020-06247-4>
116. Dams-O'Connor K, Pretz C, Billah T, Hammond FM, Harrison-Felix C (2015) Global outcome trajectories after TBI among survivors and non-survivors: a National Institute on Disability and Rehabilitation Research Traumatic Brain Injury Model Systems study. *J Head Trauma Rehabil* 30(4):E1–10
117. Dijkland SA, Helmrich I, Nieboer D et al (2021) Outcome prediction after moderate and severe traumatic brain injury: external validation of two established prognostic models in 1742 European patients. *J Neurotrauma* 38(10):1377–1388
118. Gardner RC, Cheng J, Ferguson AR et al (2019) Divergent six month functional recovery trajectories and predictors after traumatic brain injury: novel insights from the Citicoline Brain Injury Treatment Trial study. *J Neurotrauma*. <https://doi.org/10.1089/neu.2018.6167>
119. Harvey D, Butler J, Groves J et al (2018) Management of perceived devastating brain injury after hospital admission: a consensus statement from stakeholder professional organizations. *Br J Anaesth* 120(1):138–145
120. Nelson LD, Temkin NR, Dikmen S et al (2019) Recovery after mild traumatic brain injury in patients presenting to US level I trauma centers: a Transforming Research and Clinical Knowledge in Traumatic Brain Injury (TRACK-TBI) study. *JAMA Neurol* 76(9):1049–1059
121. Steyerberg EW, Wiegers E, Sewalt C et al (2019) Case-mix, care pathways, and outcomes in patients with traumatic brain injury in CENTER-TBI: a European prospective, multicentre, longitudinal, cohort study. *Lancet Neurol* 18(10):923–934
122. Mikolić A, Polinder S, Steyerberg EW et al (2021) Prediction of global functional outcome and post-concussive symptoms after mild traumatic brain injury: external validation of prognostic models in the Collaborative European NeuroTrauma Effectiveness Research in Traumatic Brain Injury (CENTER-TBI) study. *J Neurotrauma* 38(2):196–209
123. Wilson L, Stewart W, Dams-O'Connor K et al (2017) The chronic and evolving neurological consequences of traumatic brain injury. *Lancet Neurol* 16(10):813–825
124. Fann JR, Ribe AR, Pedersen HS et al (2018) Long-term risk of dementia among people with traumatic brain injury in Denmark: a population-based observational cohort study. *Lancet Psychiatry* 5(5):424–431
125. Nordström A, Nordström P (2018) Traumatic brain injury and the risk of dementia diagnosis: a nationwide cohort study. *PLoS Med* 15(1):e1002496
126. Barnes DE, Kaup A, Kirby KA, Byers AL, Diaz-Arrastia R, Yaffe K (2014) Traumatic brain injury and risk of dementia in older veterans. *Neurology* 83(4):312–319
127. Burns TC, Quinones-Hinojosa A (2021) Regenerative medicine for neurological diseases-will regenerative neurosurgery deliver? *BMJ* 373:n955. <https://doi.org/10.1136/bmj.n955>
128. Pischlutta F, Caruso E, Lugo A, Cavaleiro H, Stocchetti N, Citerio G, Salgado A, Gallus S, Zanier ER (2021) Systematic review and meta-analysis of preclinical studies testing mesenchymal stromal cells for traumatic brain injury. *NPJ Regen Med* 6(1):71. <https://doi.org/10.1038/s41536-021-00182-8>
129. Kawabori M, Weintraub AH, Imai H, Zinkevych L, McAllister P, Steinberg GK, Frishberg BM, Yasuhara T, Chen JW, Cramer SC et al (2021) Cell therapy for chronic TBI: interim analysis of the randomized controlled STEMTRA trial. *Neurology*. <https://doi.org/10.1212/WNL.00000000000011450>
130. Latchoumane C-FV, Betancur MI, Simchick GA, Sun MK, Forghani R, Lenear CE, Ahmed A, Mohankumar R, Balaji N, Mason HD et al (2021) Engineered glycomaterial implants orchestrate large-scale functional repair of brain tissue chronically after severe traumatic brain injury. *Sci Adv* 7:eabe0207. <https://doi.org/10.1126/sciadv.abe0207>
131. Xiong Y, Mahmood A, Chopp M (2010) Angiogenesis, neurogenesis, and brain recovery of function following injury. *Curr Opin Investig Drugs Lond Engl* 2000(11):298–308