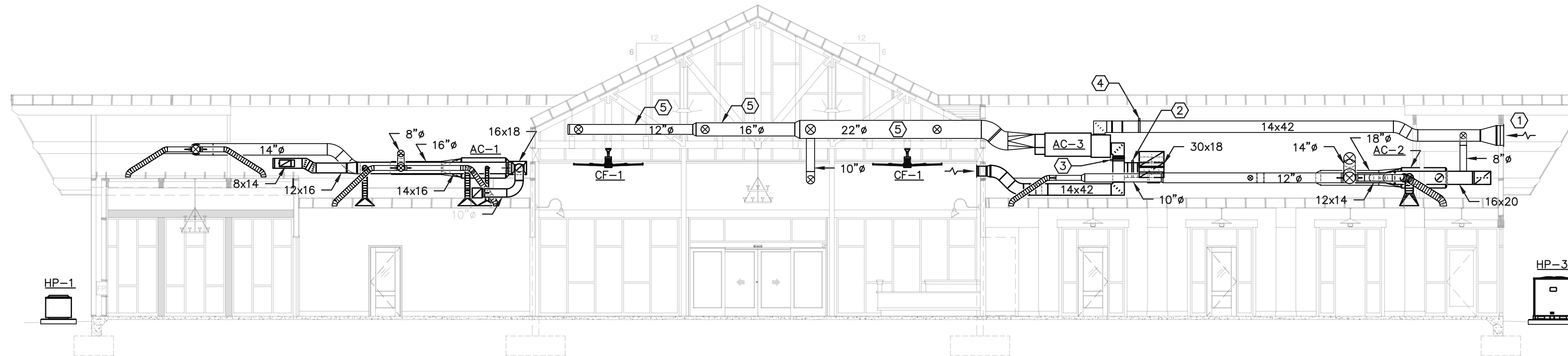


**HVAC PLAN**  
SCALE:  $\frac{1}{8}" = 1'-0"$



**LONGITUDINAL HVAC BUILDING SECTION**  
SCALE:  $\frac{1}{8}" = 1'-0"$

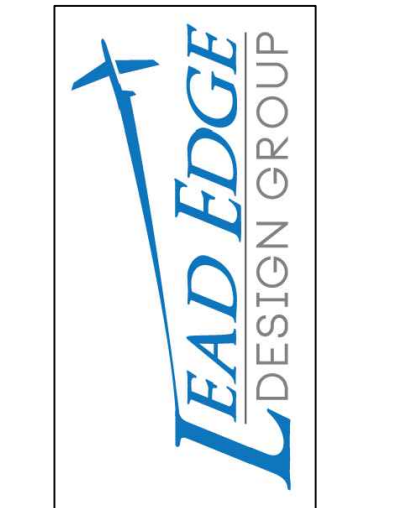
**HVAC PLAN NOTES:**

- ① XVENTBOX VENTILATION SYSTEMS MODEL 4SEB-S SINGLE BOX EXHAUST OUTLET. INSTALL WITH BOTTOM OF OUTLET A MINIMUM OF 12" A.F.F. CONNECT TO VENT DUCT FROM DRYER.
- ② XVENTBOX VENTILATION SYSTEMS MODEL 6SEB-S SINGLE BOX EXHAUST OUTLET; MOUNT AT 13'-0"± A.F.F.
- ③ XVENTBOX VENTILATION SYSTEMS MODEL 8SEB-S SINGLE BOX EXHAUST OUTLET; MOUNT AT 13'-0"± A.F.F.
- ④ 12"x12" OUTSIDE AIR INTAKE LOUVER; UNITED ENERTECH MODEL FL-D-4 OR EQUAL. PROVIDE LOUVER WITH BIRDSCREEN AND GRAVITY BACKDRAFT DAMPER. ADJUST LOUVER TO PROVIDE 205 CFM OUTSIDE AIR. LOUVER FINISH SHALL BE SELECTED BY ARCHITECT.
- ⑤ 42"x24" OUTSIDE AIR INTAKE LOUVER; UNITED ENERTECH MODEL FL-D-4 OR EQUAL. PROVIDE LOUVER WITH BIRDSCREEN AND GRAVITY BACKDRAFT DAMPER. ADJUST LOUVER TO PROVIDE 305 CFM OUTSIDE AIR MINIMUM AND 3545 CFM OUTSIDE AIR MAXIMUM. LOUVER FINISH SHALL BE SELECTED BY ARCHITECT.
- ⑥ 42"x24" RELIEF AIR LOUVER IN DORMER; UNITED ENERTECH MODEL FL-D-4 OR EQUAL. PROVIDE LOUVER WITH BIRDSCREEN AND GRAVITY BACKDRAFT DAMPER. ADJUST LOUVER TO PROVIDE 0 CFM RELIEF AIR MINIMUM AND 3425 CFM RELIEF AIR MAXIMUM. LOUVER FINISH SHALL BE SELECTED BY ARCHITECT.
- ⑦ RELIEF (EXHAUST) AIR DAMPER (SEE CONTROL SCHEMATIC).
- ⑧ RETURN AIR DAMPER IN RISER ABOVE RELIEF AIR DUCT CONNECTION (SEE CONTROL SCHEMATIC).
- ⑨ OUTSIDE AIR DAMPER (SEE CONTROL SCHEMATIC).
- ⑩ SPILL  $\frac{3}{4}"$  CONDENSATE DRAIN LINE INTO CONCRETE SPLASH BLOCK ON GRADE.
- ⑪ MECHANICAL CONTRACTOR TO SELECT HVAC EQUIPMENT FOR THIS SPACE AFTER OWNER DETERMINES EQUIPMENT TO BE INSTALLED IN 107 SUPPORT FACILITIES.
- ⑫ ROTATE THIS GRILLE AT 45° DOWN FROM HORIZONTAL.
- ⑬ PAINT EXPOSED DUCTWORK AND GRILLES IN LOBBY AREA; PAINT COLOR TO BE SELECTED BY ARCHITECT.
- ⑭ MAINTAIN A MINIMUM 10'-0" STRAIGHT LINE SEPARATION BETWEEN DRYER EXHAUST OUTLET AND 12"x12" OUTSIDE AIR INTAKE LOUVER.

**HVAC LONGITUDINAL SECTION NOTES:**

- ① 24"x42" OUTSIDE AIR INTAKE LOUVER; UNITED ENERTECH MODEL FL-D-4 OR EQUAL. PROVIDE LOUVER WITH BIRDSCREEN AND GRAVITY BACKDRAFT DAMPER. ADJUST LOUVER TO PROVIDE 305 CFM OUTSIDE AIR MINIMUM AND 3545 CFM OUTSIDE AIR MAXIMUM. LOUVER FINISH SHALL BE SELECTED BY ARCHITECT.
- ② RELIEF (EXHAUST) AIR DAMPER (SEE CONTROL SCHEMATIC).
- ③ RETURN AIR DAMPER IN RISER ABOVE RELIEF AIR DUCT CONNECTION (SEE CONTROL SCHEMATIC).
- ④ OUTSIDE AIR DAMPER (SEE CONTROL SCHEMATIC).
- ⑤ PAINT EXPOSED DUCTWORK AND GRILLES IN LOBBY AREA; PAINT COLOR TO BE SELECTED BY ARCHITECT.

C&A No. 21-092



**PICKENS COUNTY  
AIRPORT TERMINAL**  
193 PICKENS AIRPORT RD  
JASPER, GA 30143

JOB NO. 2219  
DATE 5 AUG 22  
DRAWN BY GSJ  
REVISIONS

DRAWING TITLE

HVAC FLOOR PLAN

SHEET NO.

**M1.1**